

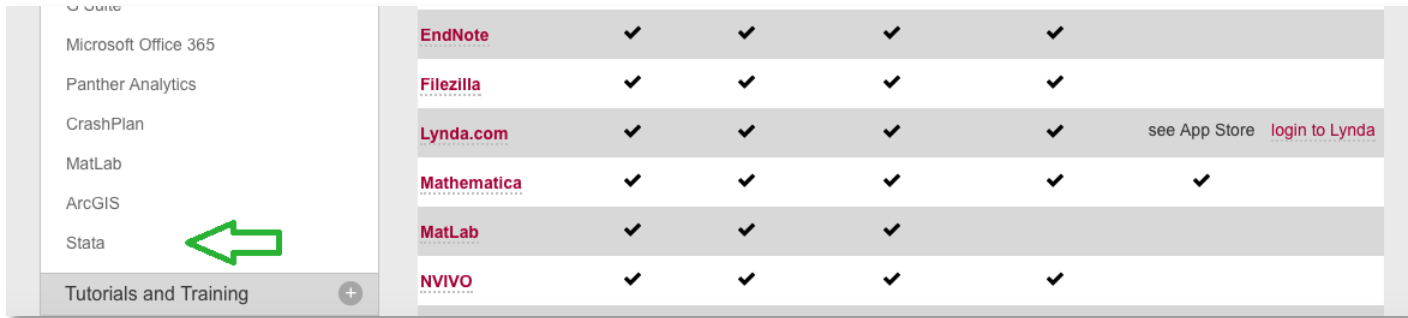
How To Install Stata for Windows

Prerequisites

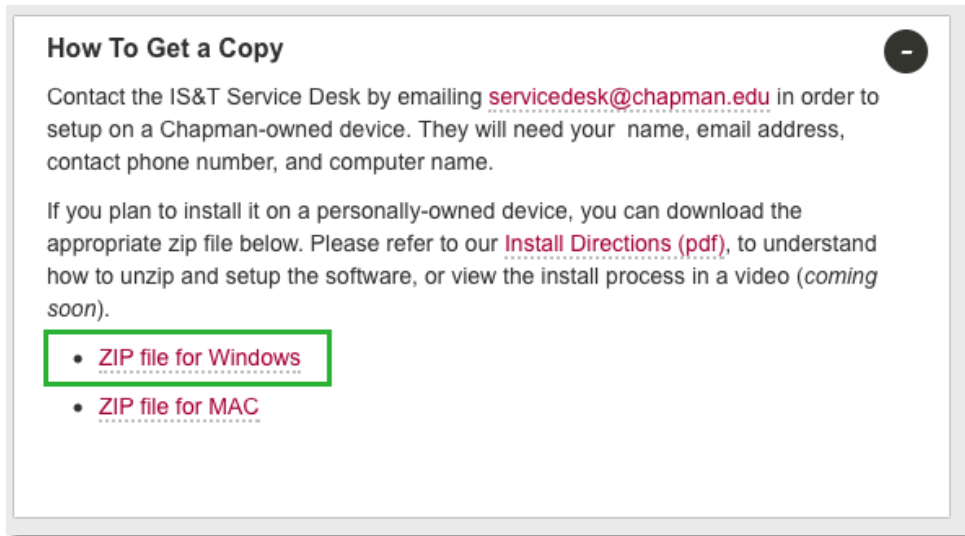
1. You must be an Administrator of your Windows computer

Getting the Software

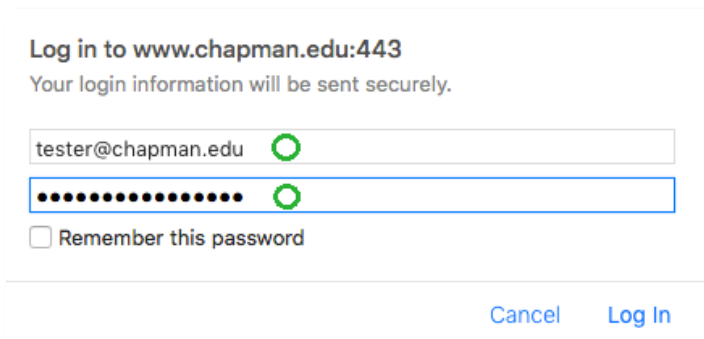
1. Open a web browser (such as Firefox) and navigate to the Software webpage at www.chapman.edu/software
2. On the *Software* page, scroll down and click **Stata** from the left-hand menu, or from the chart



3. Click **How To Get a Copy** and click **ZIP File for Windows** from the options that appear

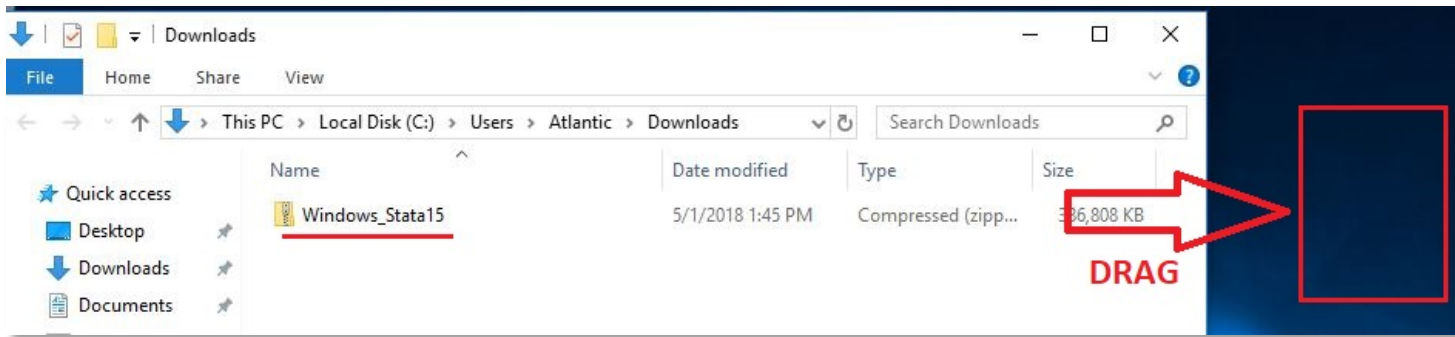


4. When prompted, enter your Chapman University E-mail credentials to begin downloading the installation files

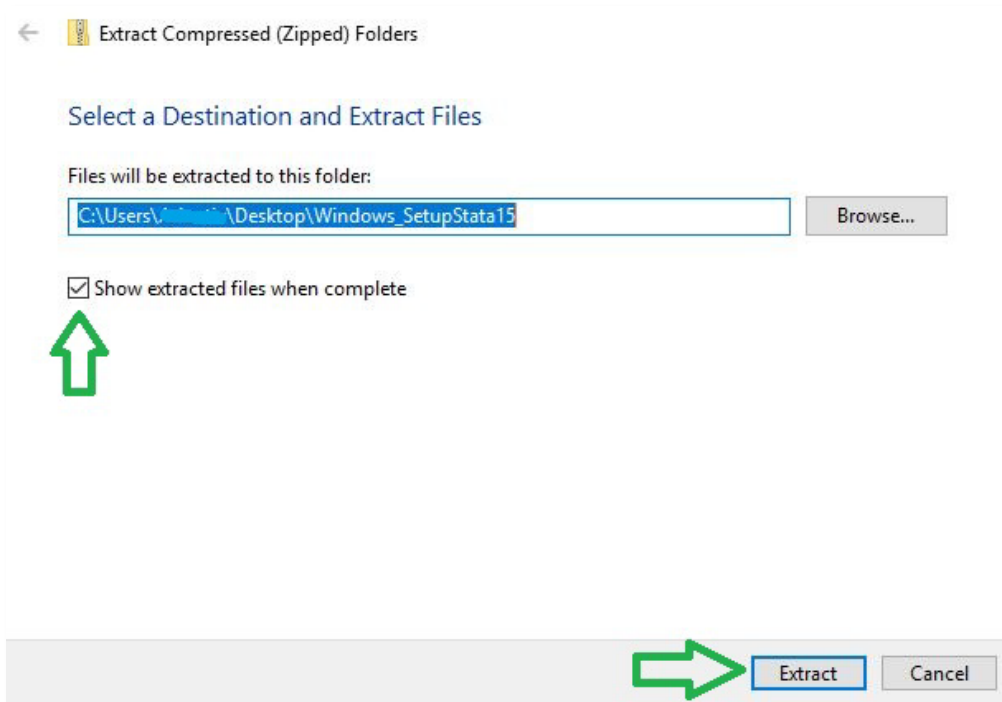


Installing Stata

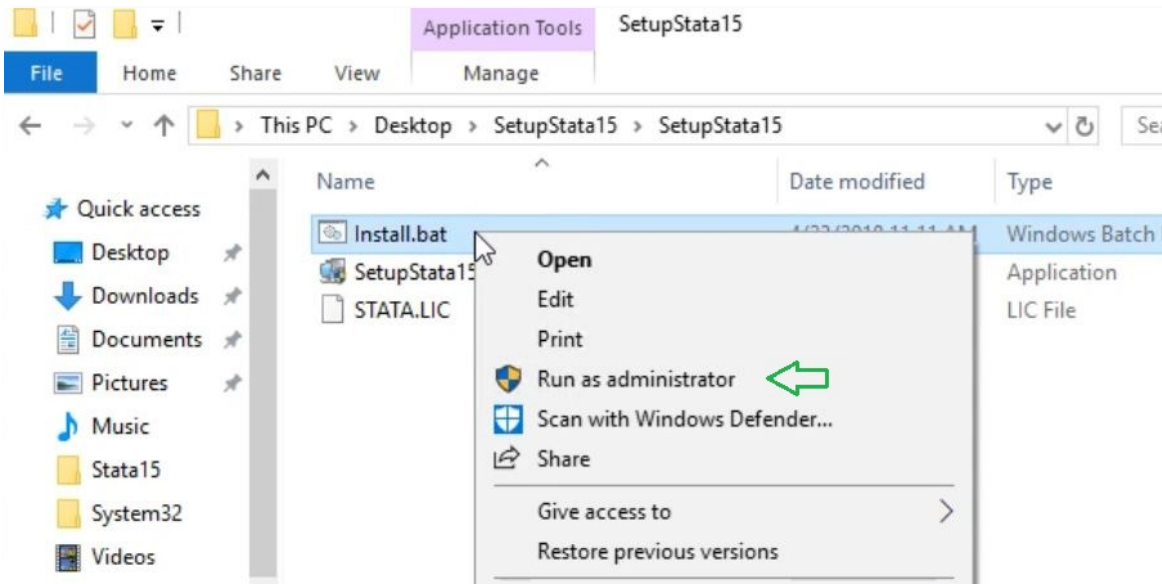
1. Navigate to your **Downloads** folder and drag the **Windows_Stata15.zip** file to your Desktop



2. Once the file is moved, right-click the **Windows_Stata15.zip** folder from your Desktop
 - a. Select **Extract All...**
 - b. Ensure **Show Extracted Files when complete** is enabled
 - c. Select **Extract**



3. In the new window that appears, select **Install.bat**
 - a. Right-click **Install.bat**
 - b. Select **Run As Administrator**
 - c. *If prompted by User Account Control, select **Yes**



4. Wait for the black window to disappear and the installation will be complete
5. Look for the **StataSE 15** shortcut on your desktop to run the program:



If there are any questions, please feel free to contact the Service Desk at **714-997-6600** OR via E-mail at servicedesk@chapman.edu