

# How To Install Stata for Mac OS

## Contents

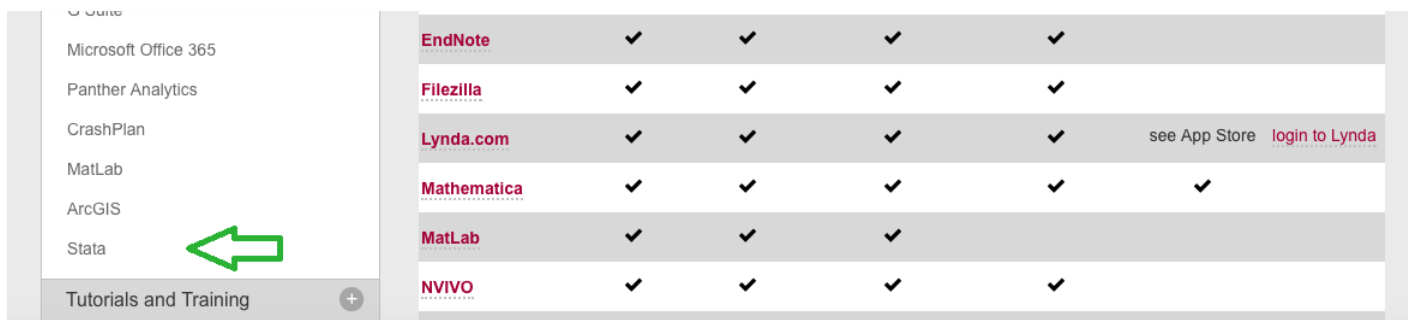
How To – Install Stata for Mac OS .....	1
Prerequisites .....	1
Getting the Software.....	1
Installing Stata.....	2
Applying Stata Software License.....	3

## Prerequisites

1. You must be an Administrator of your Macbook

## Getting the Software

1. Open a web browser (such as Safari) and navigate to the Software webpage at [www.chapman.edu/software](http://www.chapman.edu/software)
2. On the *Software* page, scroll down and click **Stata** from the left-hand menu, or from the chart



3. Click **How To Get a Copy** and click **ZIP File for MAC** from the options that appear

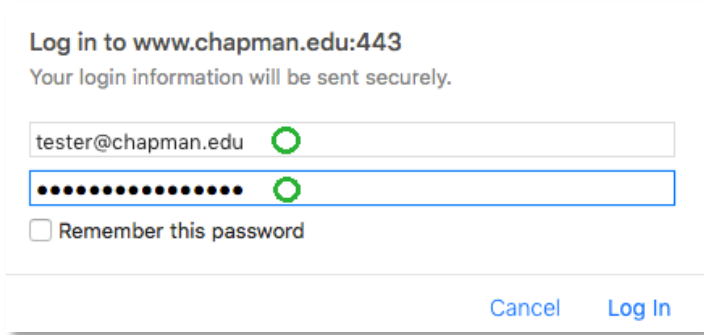
### How To Get a Copy

Contact the IS&T Service Desk by emailing [servicedesk@chapman.edu](mailto:servicedesk@chapman.edu) in order to setup on a Chapman-owned device. They will need your name, email address, contact phone number, and computer name.

If you plan to install it on a personally-owned device, you can download the appropriate zip file below. Please refer to our [Install Directions \(pdf\)](#), to understand how to unzip and setup the software, or view the install process in a video (*coming soon*).

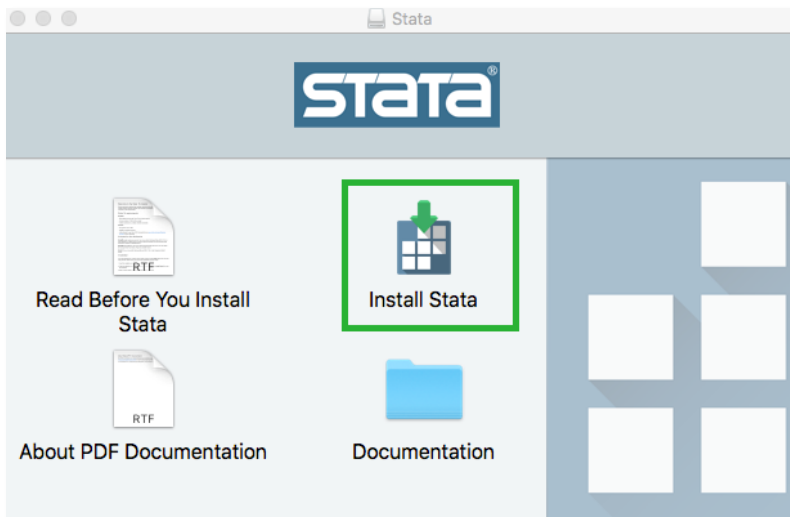
- [ZIP file for Windows](#)
- [ZIP file for MAC](#)

- When prompted, enter your Chapman University E-mail credentials to begin downloading the installation files

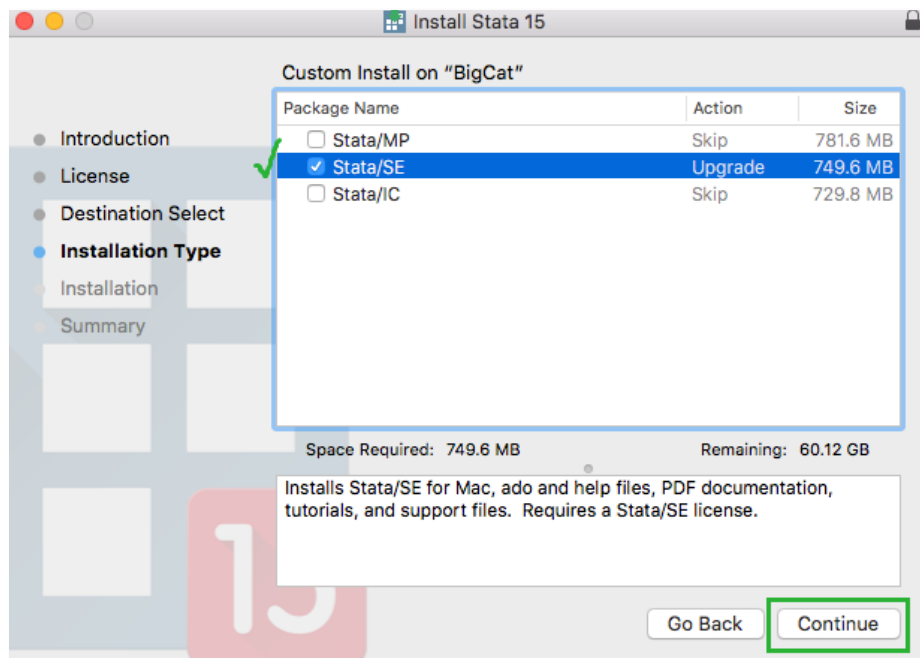


## Installing Stata

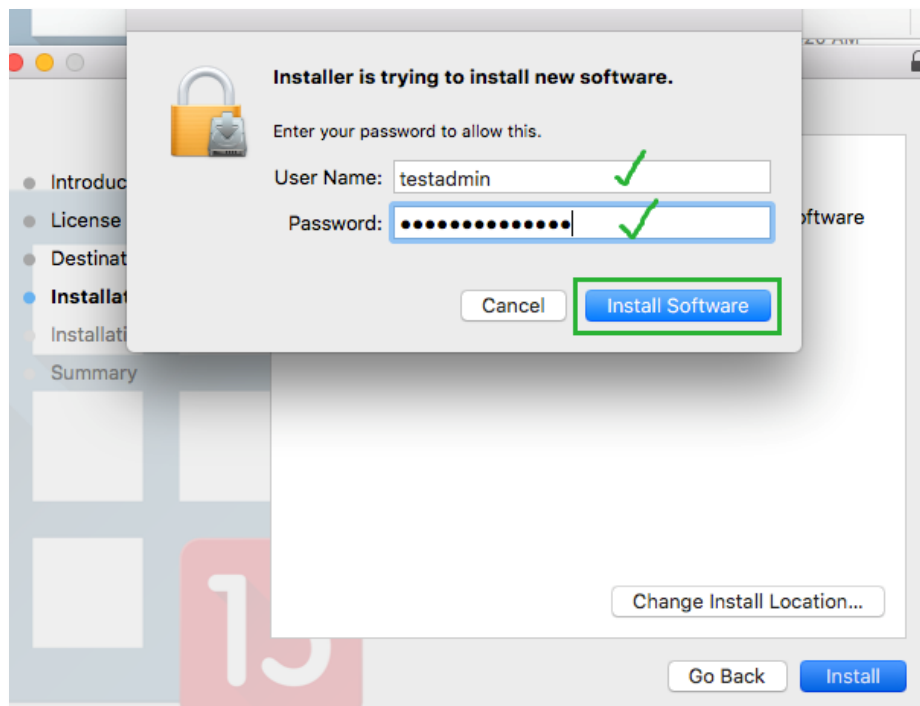
- Open your Downloads folder, find the **macOS\_Stata15** folder that was downloaded from the Chapman website, and double-click it to see the contents
- Double-click the **Stata15.dmg** file
- In the new window that appears, select Install Stata



- Click **Continue** in the first window, then click **Continue** in the second window
- Select **Agree** when prompted to read the Terms
- Select **Stata/SE** from the options and click **Continue**



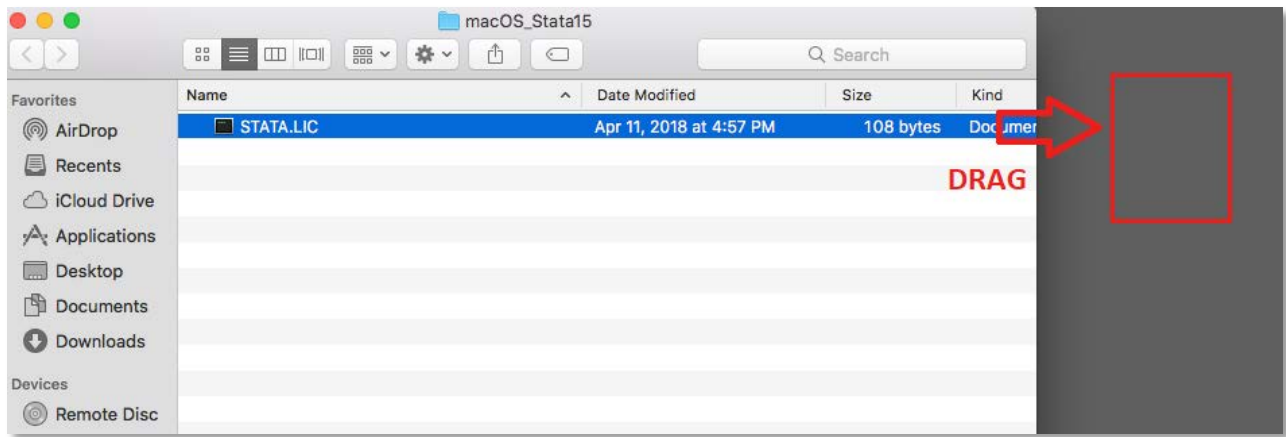
7. Select **Install** and then you will be prompted to enter your computer password credentials, then select **Install software**



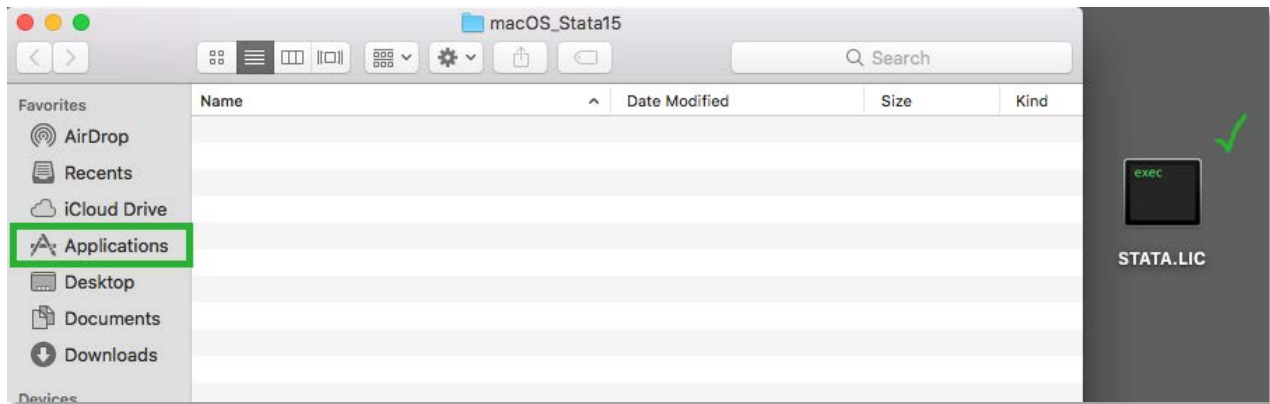
8. When the installation finishes, click **Close**

### Applying Stata Software License

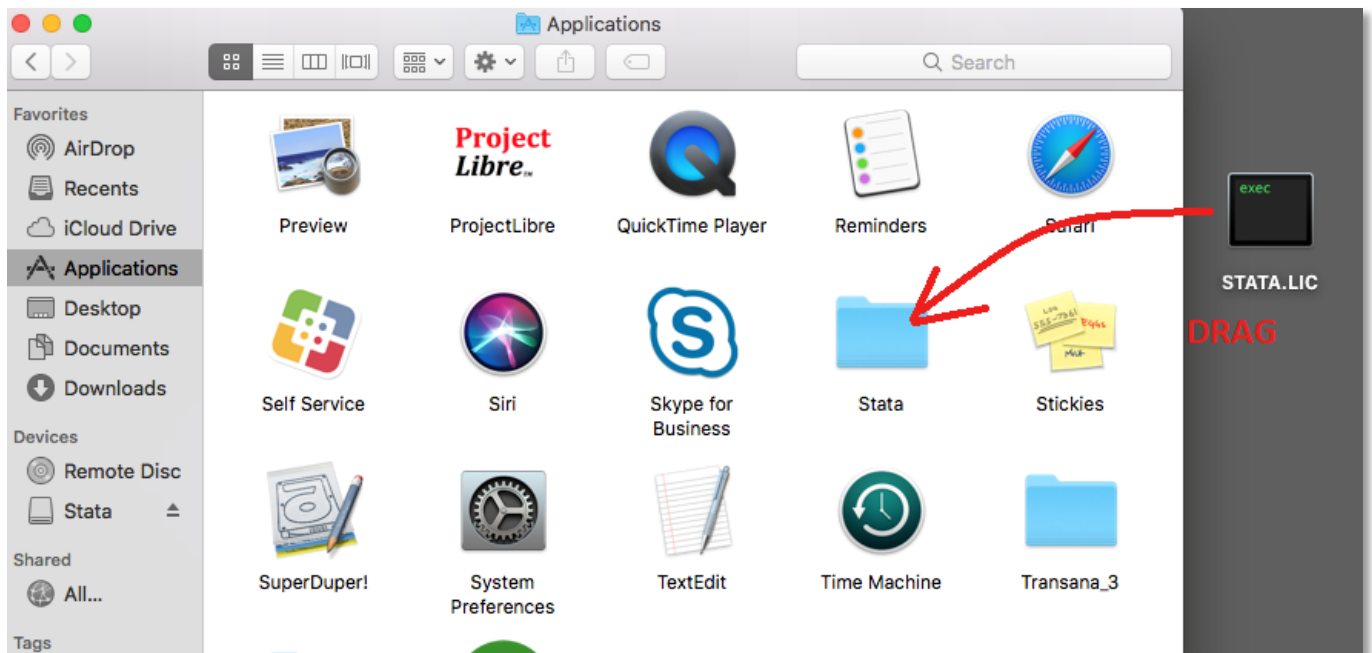
1. Go back to the **macOS\_Stata15** folder (in your Downloads) and drag the **STATA.LIC** file to your desktop



2. Select **Applications** from the side menu



3. Scroll down until you see the **Stata** folder and then Drag the **STATA.LIC** file to the **Stata** folder



4. Double-click the **Stata** folder and verify the **STATA.LIC** file is in the folder

The installation is now complete. You can now drag the **StataSE** program to your Dock or simply run it from the Applications folder. The icon looks like this:

