

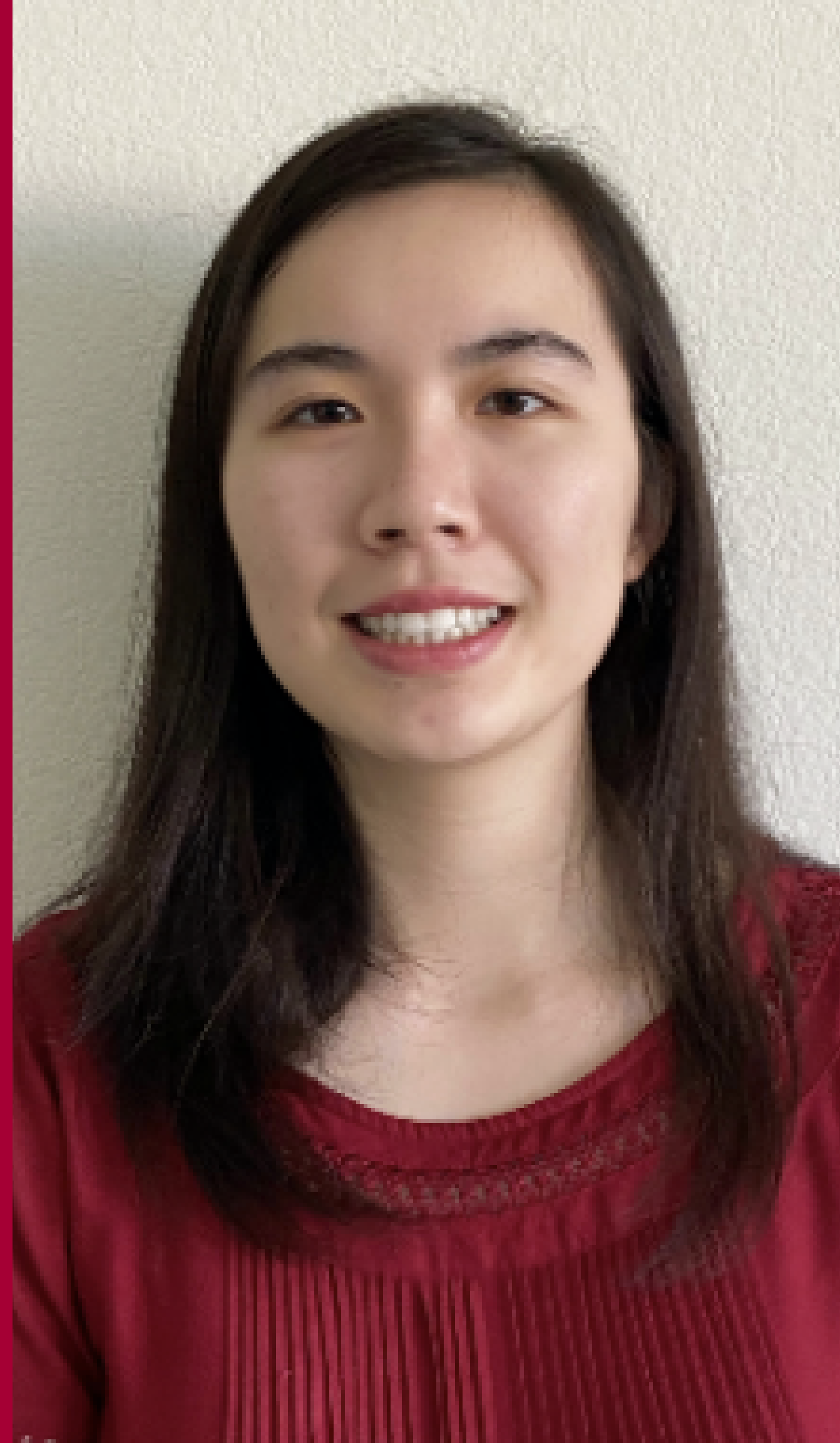
EMILY WONG

Advice

You never know until you try. Research can help determine whether or not it would be a good career path and it teaches you many things that can be applied both within and outside of both research and school. The best thing you can do is reach out to your professors as they could best guide you in terms of research and even for applying for scholarships and other opportunities. You can also reach out to the CUE as there are plenty of resources available that can guide you in making the most of the opportunity.

Current Research

My research focuses on how the gene CowN interacts with nitrogenase and if and what the relationship carbon monoxide and CowN has in protecting nitrogenase. Nitrogenase is an enzyme, which is a biological catalyst in environmental nitrogen fixation to produce ammonia. It has a significant weakness to carbon monoxide which inhibits its function when in the presence of it. There is a gene called CowN which seems to protect nitrogenase in a way that allows it to function even in the presence of carbon monoxide. We hope that by forming a better understanding of the relationship seen in the protein, we could thereby aid in more a more efficient nitrogen fixation process.



Involvements

- Tutor for Math and Biology
- Schmid Student Leadership Council
- Student Scholar Ambassador