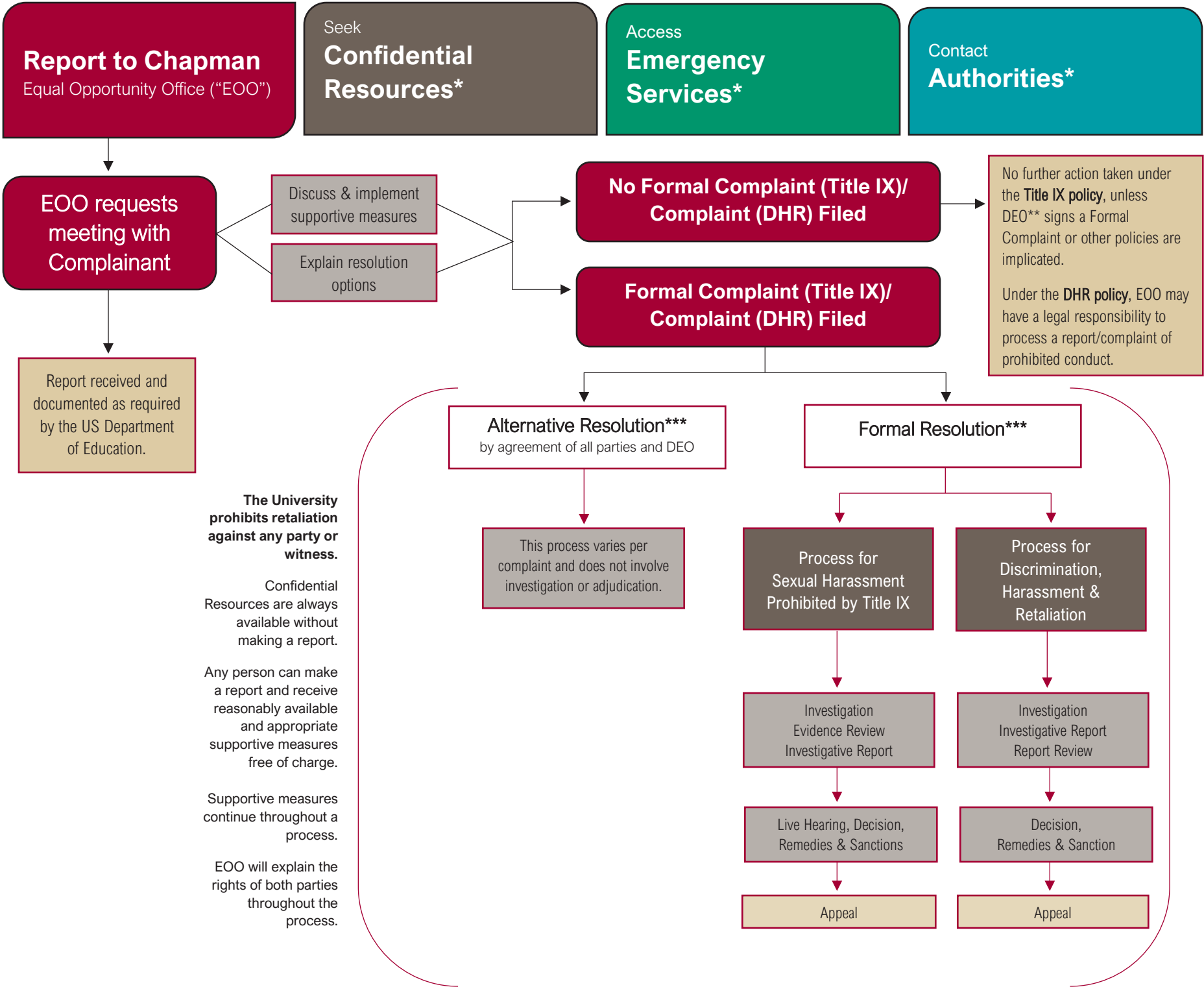


**Navigating Chapman University's Harassment, Discrimination and Retaliation Prevention Policy
and Policy on Sexual Harassment Prohibited by Title IX**

The following flowchart provides a visual representation of the processes available in these policies.

What are my options?



**See below for contact information.*
***DEO represents Director of Equal Opportunity*
****For definitions and a full understanding of these processes, please visit the applicable University policy.*