

# ATTALLAH COLLEGE OF EDUCATIONAL STUDIES DEAN'S REPORT 2025-26



# LETTER FROM THE DEAN



Chapman's Attallah College of Educational Studies is devoted to preparing the next generation of educators, scholars, and community leaders through a steadfast commitment to inclusive excellence, impactful research, and meaningful community partnerships. As we reflect on the 2025–2026 academic year, I find myself returning to a simple but powerful truth: the seeds we planted are growing.

A year ago, this report told a story of building with new undergraduate majors launched, new faculty welcomed, and new pathways forged. This year, the story is one of proof. The inaugural cohorts of our Liberal Studies and Community Educational Studies programs crossed the stage at Chapman's commencement ceremony, becoming the first graduates of programs designed to expand access and reimagine what an Attallah College education can be. Our teacher candidates achieved a 100% pass rate on the California Teacher Performance Assessments for the second consecutive year. And the faculty who joined us just a year ago are already publishing in top journals, landing impressive grants, and presenting their work at national and international conferences and events.

Everywhere I look, I see vision becoming evidence. Alumni like Sarah Nininger (IES '12), whose nonprofit Action in Africa celebrates 20 years of transforming lives in Uganda, and Hannah Mangold (MAT '24), named Outstanding Rookie of the Year Teacher by the California Council for the Social Studies, remind us what is possible when we prepare educators who lead with empathy, equity, and purpose. The Thompson Policy Institute on Disability marked its 10th anniversary with its most ambitious chapter yet, securing more than \$2.6 million in new grants and contracts to address California's teacher shortage and advance inclusive school leadership nationwide. Across our Ph.D. in Education program, undergraduate majors, and graduate credentials, students are earning recognition that reflects the caliber of preparation they receive here.

As we enter the final year of our 2022–2027 Strategic Plan, I am proud of what this college has built, and even more inspired by what our students, faculty, alumni, and partners are doing with it. The work we do at Attallah College is more than a mission. It is a promise to empower **Students Today**, support **Educators Tomorrow**, and **Impact Forever**.

With appreciation and Panther Pride,

**Roxanne Greitz Miller, Ed.D.**

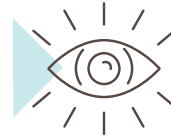
*Dean of Attallah College of Educational Studies*

*Donna Ford Attallah Professor of Teacher Education*



## MISSION

Attallah College develops equity-minded PreK-12 educators as well as higher education, community professionals, and leaders who change the world through ethical and reflective scholarship and practice.



## VISION

Attallah College aims to transform teaching, learning, and social communities toward an inclusive, equitable, and just world.

STUDENTS TODAY. EDUCATORS TOMORROW. IMPACT FOREVER.



### Action in Africa: 20 Years of Impact

**Sarah Nininger, IES '12**, is the Founder and Executive Director of Action in Africa, a nonprofit operating a thriving community center in Nakuwade, Uganda, with a mission to advance the social, personal, and economic development of children and adults through greater access to education. What began with a first visit to Uganda in 2008 has grown into a \$2 million annual operation with two dozen staff members and a community-led model now expanding across the region. Driven in part by her personal commitment to students with disabilities, shaped by her brother Trevor's experience with Cerebral Palsy, Sarah has championed inclusive programming that has given students like Shaki, who once lived just outside the center's gates, access to physical therapy, mobility support, and schooling. This year, Action in Africa celebrates 20 years of impact.

### California's Social Studies Outstanding Rookie Teacher of the Year

**Hannah Mangold, MAT '24**, was named the 2026 Outstanding Rookie of the Year Teacher by the California Council for the Social Studies, an award recognizing K-12 educators in their first five years of teaching who demonstrate exceptional promise in social studies education.



### Irvine Unified Teacher of Promise

**Andrea Barrientos, MA SPED '22**, was named a Teacher of Promise by the Irvine Unified School District, an honor given each year to a middle school educator with no more than two years of experience who demonstrates outstanding skills and commitment to the profession. Andrea was recognized for establishing co-ownership of IEP documents with students and co-developing a reading program that pairs general education students with students in the Extensive Support Needs program to build fluency and literacy skills.

### Teachers of the Year

Congratulations to **Dorcus Hoi** and **Marina Ballesteros (MA '19)**, both named Teachers of the Year by the Orange Unified School District in 2026. Their recognition is a proud reminder of the impact Attallah College graduates are making in classrooms across Southern California.



# GOAL 1



Develop education and community professionals who are well prepared to address 21st-century issues in a diverse society.

HIGHLIGHTS

## HIGHLIGHTS

### Celebrating Inaugural Undergraduate Cohorts: BA in Liberal Studies and BA in Community Educational Studies

In spring 2026, Attallah College celebrated a landmark milestone as the inaugural cohorts of the Liberal Studies and Community Educational Studies undergraduate programs crossed the stage at Chapman University’s commencement ceremony. The Liberal Studies major provides a broad interdisciplinary foundation with a focus on equity and civic engagement, while the Community Educational Studies major takes an applied approach centering community, social justice, and learning across diverse contexts. Together, these programs represent the college’s commitment to expanding access and reimagining pathways into education.

Among the first to graduate were **Natalie Almendarez McAfee, BA ‘26**, and **Rowan Eiselman, BA ‘26**, whose stories reflect exactly the students these programs were designed to serve.

McAfee, who transferred from community college after finding her calling in the classroom, will continue her studies in Chapman’s Integrated MA in Teaching program in preparation for student teaching in a secondary English classroom.

Eiselman, drawn to Community Educational Studies for its focus on adult and community learning, will pursue a Master of Studies in Law program at USC Gould School of Law, with a long-term goal of working as an educator and researcher within the criminal justice system.



**Natalie Almendarez McAfee '26**  
BA in Liberal Studies  
BA in English  
Inaugural Graduating Class



**Rowan Eiselman '26**  
BA in Community Educational  
Studies  
Inaugural Graduating Class

### Donor and Grant Support Empowering Student Success

In 2025–2026, Attallah College students received \$1,427,364 in combined funding from Golden State Teacher Grants, TEACH Grants, Chapman institutional aid, and donor contributions. This financial support provided critical fellowship assistance to students enrolled in the college’s teacher education, school counseling, and school psychology programs, helping to reduce financial barriers and advance their professional preparation.

#### TEACHER EDUCATION PROGRAMS

5 TEACH GRANT STUDENTS

**\$16,502**

32 GOLDEN STATE STUDENTS

**\$310,503**

#### SCHOOL COUNSELING & SCHOOL PSYCHOLOGY PROGRAMS

42 GOLDEN STATE STUDENTS

**\$411,322**

#### CHAPMAN AID & DONOR GIFTS SUPPORTING ALL EDUCATOR PREPARATION PROGRAMS

133 STUDENTS SUPPORTED

**\$689,037**

**\$1,427,364 TOTAL**

TEACH GRANTS, GOLDEN STATE TEACHER GRANTS, CHAPMAN AID, AND DONOR GIFTS SUPPORTED FELLOWSHIPS OFFERED TO STUDENTS

## 2025–2026 PH.D. IN EDUCATION HIGHLIGHTS



### Doctoral Fellowship Advances Equity Research

**Cristal Flores**, Ph.D. in Education candidate in the Cultural and Curricular Studies emphasis, was awarded Chapman University's Provost's Dissertation Fellowship for the 2025–2026 academic year. Her dissertation investigates how immigrant Latina mothers, through individual and communal practices, support their families while navigating systemic adversity.

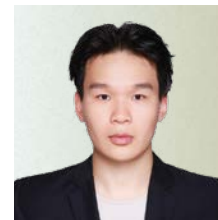


### Ph.D. Student Recognized for International Genocide Research

**Sevana Karagoulian**, a second-year Ph.D. student in the Leadership Studies emphasis, was selected to participate in the eighth edition of the Scheidt Family Seminar on Genocide Studies and Prevention at the University of Connecticut. The competitive weeklong seminar brings together scholars dedicated to genocide research from across the country.

### Chapman Equity Scholars First Cohort

This year, Attallah College welcomed its first cohort of Chapman Equity Scholars, a fully funded fellowship for Ph.D. in Education students committed to addressing racial inequities in K–12 and higher education. Fellows receive full tuition coverage, graduate assistantships, research and travel funding, and health insurance.



#### Wenyang (Jack) Cao

Ph.D. in Education Student,  
Leadership Studies emphasis  
Chapman Equity Scholar

M.Ed., Educational Counseling,  
University of Southern  
California  
B.A., Psychology,  
University of Miami



#### Brandon Gernux

Ph.D. in Education Student,  
Disability Studies emphasis  
Chapman Equity Scholar

M.S., Educational Counseling  
with P.P.S. Credential,  
National University  
B.A., Family and Consumer  
Sciences, California State  
University, Long Beach

## 2025–2026 SCHOOL COUNSELING & SCHOOL PSYCHOLOGY HIGHLIGHTS



### California School Counselor Educator of the Year

Instructional Assistant Professor of School Counseling **Ranee Kirkemo** was named the 2026 Counselor Educator of the Year by the California Association of School Counselors (CASC), a prestigious award recognizing one school counselor educator in California each year who demonstrates exceptional leadership, mentorship, and dedication to the profession.



### CASP Cultural and Linguistic Diversity Scholarship

Ed.S. School Psychology student **Gabe Ryan '27** was named a recipient of the California Association of School Psychologists' Cultural and Linguistic Diversity Scholarship, recognizing emerging school psychologists who demonstrate academic excellence and a commitment to serving culturally and linguistically diverse communities.

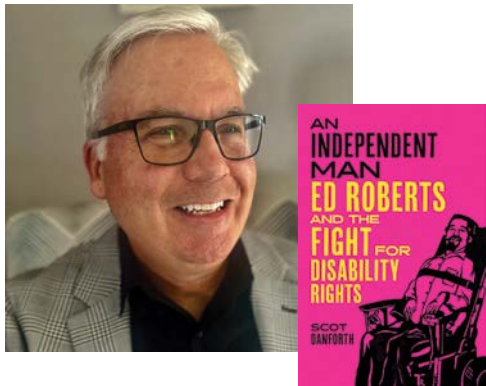
# GOAL 2



Increase the impact and influence of the college's research and scholarly activities.

## HIGHLIGHTS

### FACULTY RESEARCH BOOK RELEASES



#### Honoring the Disability Rights Movement: A New Biography from Professor Scot Danforth

Professor **Scot Danforth**, Assistant Dean of Research and Jack H. and Paula A. Hassinger Chair in Education, published *An Independent Man: Ed Roberts and the Fight for Disability Rights* (University of California Press, 2025). The biography, eight years in the making, chronicles the life of Ed Roberts, widely regarded as a founder of the disability rights movement and the broader history of the movement he helped shape. Drawing on dozens of interviews with congressional representatives, state legislators, family members, and colleagues, Danforth brings Roberts' story to life with the depth and texture it has long deserved.



#### A New Framework for Peace: Professor Whitney McIntyre Miller's First Book

Professor **Whitney McIntyre Miller** released her first book, *Integral Peace Leadership: Theory and Practice for Creating Peaceful Change* (Routledge, 2026), drawing on more than a decade of research at the intersection of leadership, peace studies, and conflict transformation. The book centers on four interconnected areas: Innerwork, Knowledge, Community, and Environment, and includes 16 narratives of individuals and groups working toward peaceful change in their communities. McIntyre Miller developed the integral peace leadership framework after identifying a gap in scholarship that examined leadership through a peace lens and peace through a leadership lens, and expanded her research through collaboration with the Euphrates Institute.

### LOOKING AHEAD: FORTHCOMING FACULTY BOOKS



Professor of Education **Quaylan Allen** is completing a forthcoming book with Routledge, tentatively titled *(In)Visible Men on Campus: Black College Men Navigating the Campus Racial Climate of Historically White Universities*, and anticipated for release in summer 2026.

Assistant Professor of Quantitative Methods **Doug Havard** has a forthcoming book, *Deconstructing STEM: A Critical History of Policy, Power, and Participation*, accepted by Harvard University Press and anticipated for release in fall 2027.



# FACULTY RESEARCH SPOTLIGHT



## Exploring Black College Student Voice and Belonging

Professor **Quaylan Allen** published two scholarly articles examining the experiences of Black college students. The first, "In a Way It Certainly Tells Us that We Don't Belong Here": Black First-Generation College Students Visualizing Their Sense of Belonging at a Historically White Institution, appeared in *Urban Education*. The second, "My ideal audience...": Image Production and Imagined Audiences in a Visual Project with Black College Students," was published in the *International Journal of Qualitative Studies in Education*.



## Centering Latinx Family and Community in Higher Education

Assistant Professor **Stephany Cuevas** published in the *Journal of Latinos and Education* on Latina students' belonging and cultural space at an emerging Hispanic-Serving Institution and co-authored a piece in the *Harvard Educational Review* examining how college access professionals use community-based knowledge to support first-generation families. She also delivered a keynote at the Dallas Independent School District's Campus Connector Learning Exchange and was selected for the prestigious CREEO Visiting Scholars Program at UC Berkeley's Center for Research on Expanding Educational Opportunity, where she will advance her research on Central American unaccompanied youth in California public schools.



## Advancing Equity and Leadership in P-12 Schools

Assistant Professor **Andrew Matschiner** published "P-12 District Equity 'Shutdown': Equity Directors' Experiences Amid Anti-Equity Organizing, 2020-2022" in *Urban Education* and co-authored a chapter in the forthcoming book *Doing the Work of Equity Leadership for Justice and Systems Change*. He also received a 2026-2027 New Research Exploration Grant from Chapman's Office of Research and Graduate Education (\$14.5K) to advance his ongoing research program.



## Advancing Quantitative Research in STEM and Higher Education

Assistant Professor of Quantitative Methods **Doug Havard** published "Beyond the Pipeline: First-Generation College Students' Community Cultural Wealth and STEM Degree Pathways" in *Research in Higher Education*, co-authored with colleagues from the 2025 NCES Data Institute, and presented the study at the Association for Institutional Research Forum in Washington, D.C. He also published "Navigating Intersectional Margins: A Multilevel Analysis of First- and Second-Generation Immigrant Students' Academic Outcomes Within Urban Coethnic Communities" in *Urban Education*, developed over two years with a lab group of high school students now attending universities across the country.

# GOAL 3



Enhance collaborations to address needs and opportunities in education and community settings.

## HIGHLIGHTS

## BUILDING PATHWAYS: CULTIVATING THE NEXT GENERATION OF EDUCATORS THROUGH COMMUNITY PARTNERSHIPS

Chapman University's Attallah College is strengthening its roots in the surrounding community, welcoming local high school students to campus, celebrating milestone undergraduate cohorts, and continuing to offer accelerated routes into the teaching profession.

Attallah College has been actively cultivating relationships with local school districts, inviting prospective first-generation college students to experience Chapman firsthand and envision themselves as future educators. This year, the college welcomed students from Century High School's TEACH Academy in the Santa Ana Unified School District and from Corona High School and Norco High School in the Corona-Norco Unified School District's Education CTE program.



Dean Roxanne Greitz Miller with Corona-Norco Unified School District leadership.

### A DAY ON CAMPUS

The visit opened with remarks from Dean Roxanne Greitz Miller, followed by sessions led by Shannon Crogan, director of transfer admission, and Dr. Jillian Wood, associate dean for academic affairs and director of undergraduate education. Students heard from a first-generation student panel featuring current Attallah undergraduates, who shared their paths to Chapman and their experiences on campus.

### INAUGURAL COHORTS CROSS THE STAGE

During their visit, students also learned about an exciting milestone: the inaugural cohorts of two Attallah College undergraduate programs, Liberal Studies and Community Educational Studies graduated in Spring 2026. The **Liberal Studies** major prepares aspiring elementary and special education teachers to become front-running educators dedicated to student success. The **Community Educational Studies** major is designed for aspiring educators who want to teach, train, and lead beyond the traditional K-12 classroom, equipping graduates to apply educational principles across a variety of settings, from community-based programs and nonprofits to human resources, public policy, and beyond.

### A FASTER, MORE AFFORDABLE ROUTE TO THE CLASSROOM

Prospective students who pair a Liberal Studies major with a minor in Elementary Education are well-positioned to pursue Attallah College's Integrated Teacher Education Pathways, a streamlined route to earning both a bachelor's and a master's degree while completing a California teaching credential. These pathways can cut the cost of graduate school by as much as 50%, continuing to remove the barriers and burdens many first-generation students experience in higher education.





MA in Teaching and MA in Special Education students gathered to prepare for their 2025–2026 fieldwork placements.



The Graduate Teacher Education Program Staff & Faculty



The School Psychology and School Counseling Program Staff & Faculty

## Serving Schools While Preparing Future Education Leaders

During the 2025–2026 academic year, Attallah College students dedicated thousands of hours to hands-on training in local school districts. Across the teacher education, school psychology, and school counseling programs, students provided direct service and support in classrooms and on school campuses throughout the region.

### DURING 2025–2026, ATTALLAH COLLEGE STUDENTS DIRECTLY SUPPORTED REGIONAL K-12 SCHOOLS:

#### TEACHER EDUCATION



**39,123** HOURS

- Anaheim Elementary School District
- Alvord Unified School District
- Capistrano Unified School District
- EL Sol Science and Art Academy
- Fullerton Elementary School District
- Fountain Valley School District
- Garden Grove Unified School District
- Hermosa Beach City School District
- Huntington Beach Union High School District
- Irvine Unified School District
- Magnolia Elementary School District
- Newport-Mesa Unified School District
- Orange County Department of Education
- Orange County School of the Arts
- Orange Unified School District
- Placentia-Yorba Linda Unified School District
- Santa Ana Unified School District
- Saddleback Valley Unified School District
- Tustin Unified School District
- Westminster Elementary School District
- Walnut Valley Unified School District

#### SCHOOL PSYCHOLOGY



**34,588** HOURS

- Anaheim Elementary School District
- Anaheim Union High School District
- Greendot Public Schools
- Huntington Beach Union High School District
- Irvine Unified School District
- La Habra City School District
- Laguna Beach Unified School District
- Long Beach Unified School District
- Los Alamitos Unified School District
- Manhattan Beach Unified School District
- Newport-Mesa Unified School District
- Norwalk La Mirada Unified School District
- Orange Unified School District
- Placentia Yorba-Linda Unified School District
- Tustin Unified School District

#### SCHOOL COUNSELING



**18,224** HOURS

- Alvord Unified School District
- Anaheim Union High School District
- Bellflower Unified School District
- Capistrano Unified School District
- Corona-Norco Unified School District
- Culver City Unified School District
- Fullerton Joint Union High School District
- Garden Grove Unified School District
- Huntington Beach City School District
- Irvine Unified School District
- Little Lake City School District
- Long Beach Unified School District
- Newport-Mesa Unified School District
- Norwalk-La Mirada Unified School District
- Placentia-Yorba Linda Unified School District
- Redondo Beach Unified School District
- Saddleback Valley Unified School District
- Santa Ana Unified School District
- Tustin Unified School District
- Westminster School District

# GOAL 3



Enhance collaborations to address needs and opportunities in education and community settings.

## HIGHLIGHTS



### A Student-First Vision: Dean Roxanne Greitz Miller's Leadership

Under Dean Roxanne Greitz Miller's leadership, Attallah College has doubled undergraduate applications and launched multiple integrated bachelor's to master's pathways in teacher education. Her student-first philosophy drives everything from strategic investments in faculty research funding to the redesign of campus spaces with student study lounges and basic amenities. Through annual listening tours with local superintendents, she ensures that programs align with workforce needs.

### The Dean's Dozen: 2025-2026 Student Advisory Council

The Dean's Dozen, a selective council of 12 student leaders representing Attallah College's undergraduate and graduate programs, provided valuable insights throughout the 2025–2026 academic year. Meeting regularly with Dean Roxanne Greitz Miller, the group offered feedback on student experiences, emerging needs, and new initiatives.

### Graduate Representatives



**Quindon Robinson '27**  
Ed.S. in School Psychology,  
LPCC Emphasis



**Jessica Romero '27**  
MA in School Counseling,  
LPCC Emphasis

### Undergraduate Representatives



**Abby Godfrey '26**  
Liberal Studies Major  
and Elementary  
Education Minor



**Annika Lindberg '26**  
Integrated Educational  
Studies Major and  
Political Science Major



**Gracie Juarez '27**  
MA in Special Education,  
Preliminary ESN  
Credential



**Shoshana Lehrer '26**  
MA in Curriculum and  
Instruction



**Gasia Karakesis '26**  
MA in Teaching,  
Elementary Education



**Claire Florio '28**  
Community Educational  
Studies Major with  
Disability Studies and  
Leadership Studies Minor



**Sam Silverman '28**  
Liberal Studies Major and  
Elementary Education  
Minor



**Kat Dimpflmaier '26**  
MA in Leadership  
Development



**Connor Bogenreif**  
Ph.D. in Education  
(Leadership Studies  
Emphasis)



**Davis Nardi '26**  
MA in Teaching,  
Secondary Education,  
English/Language Arts

# THOMPSON POLICY INSTITUTE ON DISABILITY MARKS 10 YEARS WITH RECORD-BREAKING IMPACT

For a decade, the Thompson Policy Institute on Disability (TPI) at Chapman University has worked to develop and improve learning and community environments for people with disabilities through impactful research, policy reform, and practice. Its effectiveness stems from a collaborative, community-driven approach that ensures the voices and needs of people with disabilities remain at the center of its work.



## A NEW GRANT FOR INCLUSIVE PRINCIPAL LEADERSHIP

TPI also received approval for an \$848,859 three-year grant from the Oak Foundation to continue and expand its inclusive principal leadership initiatives. This funding will support statewide and national efforts to equip school leaders with evidence-based strategies to better serve students with disabilities and design more inclusive school systems. The project is led by **Meghan Cosier**, professor and executive director of the Thompson Policy Institute on Disability, and **Audri Sandoval Gomez**, director of the Thompson Policy Institute on Disability, who serves as co-principal investigator. **Kari Adams** serves as director of the Inclusive Leadership Center.

## A \$1.49M GRANT TO ADDRESS THE TEACHER SHORTAGE

TPI received a \$1.49 million grant from the Gates Foundation to launch a bold new initiative addressing two critical challenges: the shortage of fully credentialed teachers and the need for high-quality mathematics instruction in inclusive classrooms. The three-year project will develop sustainable teacher residency models that prepare a new generation of educators to deliver inclusive, evidence-based math instruction across urban, rural, and high-need districts in California. The effort will support 100 teacher residents and 200 in-service educators and builds on TPI's California Educator Preparation Innovation Collaborative work. Attallah College Associate Professor **Jennifer E. Kong** will serve as a content and professional learning expert focusing on math interventions for English learners with disabilities.



From left, TPI's director Audri Sandoval Gomez, executive director Meghan Cosier, and director of the Inclusive Leadership Center Kari Adams.

# GOAL 3



Enhance collaborations to address needs and opportunities in education and community settings.

## HIGHLIGHTS



### Connecting Students with Careers: Spring Career Day

Attallah College's Spring Career Day brought together students and school-based employers for an afternoon of connection and opportunity in Reeves Hall. Five district and school partners went above and beyond, extending their hours to ensure students navigating full-time fieldwork, internships, and practicums had meaningful time to explore employment opportunities. Representatives from Claremont Unified School District, Corona-Norco Unified School District, Newport Mesa Unified School District, New West Charter School, and Placentia Yorba-Linda Unified School District each made a special effort to meet with Attallah College's future teachers, school counselors, and school psychologists. The event reflects the college's deep and growing network of district partnerships, and the shared commitment of those partners to investing in the next generation of educators before they even enter the workforce.

### Community-Engaged Research and Cultural History

Instructional Associate Professor of Education **Jorge F. Rodriguez** collaborated with the Santa Ana Youth Media Project, the Orange Barrio Historical Society, and students in "CES 295: Critical Media Literacies Fieldwork" to develop a digital Historical Mapping App Tool documenting the desegregated histories and cultural landmarks of the Cypress Street Barrio in Orange, California. The project, which included a two-hour oral history with a 106-year-old community member, was accepted for presentation at the Critical Questions in Education conference.



### Undergraduate Represents Chapman in Statewide Policy Advocacy

Liberal Studies undergraduate **Rusty Henry** was selected to participate in the 2026 Independent California Colleges Advocate Program (ICCAP) cohort, representing Chapman University in Sacramento. Through the six-month program, Henry has engaged directly with state policymakers to advocate for nontraditional college students, those who face additional barriers when not attending college immediately after high school.

# GOAL 4



*Expand, nurture and sustain a culture of continuous improvement among the college's personnel and programs.*

## HIGHLIGHTS



### Our 2025–2026 New Faculty Member

**Carla Smith, Ph.D.**, joined Attallah College as an Instructional Assistant Professor of School and Clinical Counseling, bringing more than two decades of experience as an educator and professional school counselor. Most recently, Dr. Smith served as counseling faculty and program coordinator at Texas A&M University–San Antonio. She earned her doctorate in counselor education and supervision from the University of the Cumberlands. Her career spans roles as an elementary teacher, school counselor in public schools and with the Department of Defense, and a Licensed Professional Counselor Supervisor in Texas.

### 2026 Valerie Scudder Award

Assistant Professor **Stephany Cuevas** received Chapman University's 2026 Valerie Scudder Award, recognizing outstanding achievement in teaching, scholarship, and service. Over six years at Chapman, Cuevas has built a nationally recognized research agenda focused on first-generation students, immigrant families, and Latinx and Central American youth, earning the 2023 American Association of Hispanics in Higher Education Early Career Book Award for her book *Apoyo Sacrificial* (Teachers College Press, 2021). Beginning in 2026, she will also serve as Editor of the *Journal of Diversity in Higher Education*, a distinction rarely held by assistant professors.



### Our 2026–2027 Faculty Promotions

Attallah College is proud to celebrate the following faculty members promoted effective August 1, 2026, following rigorous review by their peers and administrators:



**Tara Barnhart**  
Promotion to Associate Professor of Teacher Education with Tenure



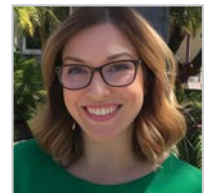
**Jennifer E. Kong**  
Promotion to Associate Professor of Special Education with Tenure



**Jorge Rodriguez**  
Promotion to Instructional Associate Professor of Education



**Quaylan Allen**  
Promotion to Professor of Education



**Whitney McIntyre Miller**  
Promotion to Professor of Leadership Studies

Chapman University's Attallah College faculty and students participated in state, national, and international conference presentations in 2025-2026, including the following conferences.



American Educational Research Association (AERA)



National Association of School Psychologists (NASP)



California Association of School Counselors (CASC)



International Leadership Association (ILA)

## CONFERENCE HIGHLIGHTS



### Rethinking Student Support in the Digital Age

Attallah College hosted its third annual Imagining a Resilient Future in the Schools conference in November 2025, focusing on student mental health in a digital world. Co-led by Associate Professors **Amy Jane Griffiths** and **Kelly Kennedy** and co-sponsored by the Thompson Policy Institute on Disability, the conference featured three keynote speakers from UC Irvine and USC, a youth voices panel with Orange County Department of Education partners, and the inaugural presentation of the Julian Sadasivaiah Endowed Graduate Student Fellowship in Mental Health, awarded to Reva Blitz.



### Empowering School Leaders Through Peace Leadership

Attallah College hosted its third annual Peace Leadership in Schools Summit in fall 2025, supported by the Miner Anderson Family Foundation. Organized by Associate Professor **Anna Abdou**, Professor **Whitney McIntyre Miller**, and Instructional Associate Professor **Trisha Sugita**, the summit brought together 25 participants from eight Southern California school districts and educational institutions. Participants engaged in guided training on integral peace leadership principles and applied for grants of up to \$2,000 to launch campus-based initiatives.



### Inaugural National Conference on Quantitative Reasoning in STEM Education

In January 2026, Attallah College co-hosted a landmark two-day national conference on "Advancing Research on Quantitative Reasoning in STEM Education" alongside Schmid College of Science and Technology. Nearly 100 attendees from 46 institutions across 26 states gathered at Chapman to explore innovative teaching methods, cognitive frameworks, and interdisciplinary assessment strategies. Provost Michael Ibba welcomed attendees, highlighting Chapman's growing strength in STEM education research. Attallah faculty organizers included Associate Professor **Tara Barnhart** and Assistant Professor **Doug Havard**.

# SUPPORT ATTALLAH COLLEGE OF EDUCATIONAL STUDIES

At Attallah College, we take a unique approach to shaping the future of education. We empower minds to create positive change in the world, not just through traditional methods, but also by fostering innovation and creativity. Distinguished scholars, passionate teachers, and experienced professionals all converge at Attallah College, creating a dynamic research and teaching environment for our students who are at the heart of everything we do. Ways you can make a difference by supporting our efforts include:

## Increasing Attallah College's Endowment

Endowments can fund scholarships, professorships, chairs and more. Once an endowment is created, your gift becomes part of Chapman's heritage and tradition and will provide a lasting funding source. Endowed funds are an excellent way to honor a family member, mentor or loved one in perpetuity.

## Undergraduate Scholarships and Graduate Fellowships

At Chapman, we're proud to offer tuition assistance to more than 84% of students. Financial aid has a profound impact on students and their families and helps to diversify the educator workforce, providing PreK-12 students with role models from diverse demographic and socioeconomic backgrounds that mirror their own.

## Non-Tuition Financial Support for Educator Candidates

During Field-Based placements, depending on the academic program, Attallah College students are required to engage in 600 to 1,800 hours of unpaid fieldwork while attending classes. Providing non-tuition fellowships (which can support costs of housing, transportation, food, and childcare) enables candidates of lower socioeconomic backgrounds to choose education as a career, complete their degrees, and lower their debt burden after entering the profession.

## Faculty Research and Community-Based Programming

Attallah College faculty are contributing to changing education and improving our communities through multiple avenues of research and community programs, most of which actively include Chapman students as collaborators. Providing financial support for these scholarly and creative endeavors furthers Attallah College's motto of "Changing Education and Changing the World."



## HOW TO MAKE A GIFT

For your convenience, Chapman University accepts gifts in a variety of forms, many of which offer valuable tax incentives.

### Online Giving Portal

Gifts via credit card can be made using our secure online giving portal, Touchnet. Scan the QR code below with your phone to see a list of funds for Attallah College and make your gift now!



### Send a Check by Mail

Checks may be sent through the mail to the address below. Please include **Purpose of Gift** and/or **Fund Name** in the memo line of your check.

Chapman University  
Gift Recorder  
One University Drive  
Orange, CA 92866

### Other Ways to Give

If you would like to learn more about multiyear pledges, honorary or memorial gifts, planned giving, or have any other questions or needs, please contact Stephanie Mohl, [mohl@chapman.edu](mailto:mohl@chapman.edu), (714) 628-7305.

---

**STUDENTS TODAY.  
EDUCATORS TOMORROW.  
IMPACT FOREVER.**

---



**CHAPMAN  
UNIVERSITY**

**Attallah College of  
Educational Studies**

One University Drive, Orange, California 92866

**Chapman.edu**