



▲ Film Still in Bridge

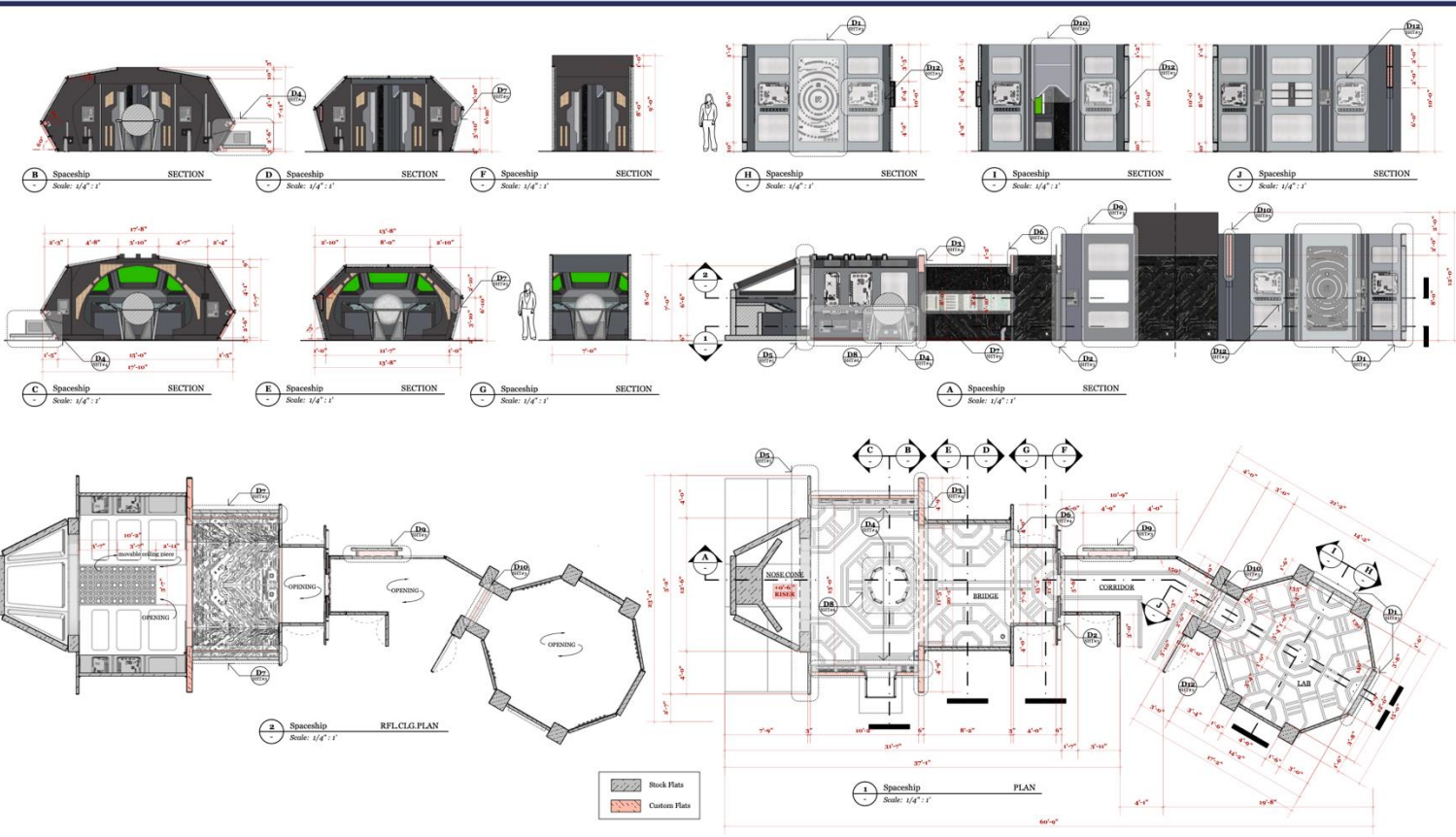
**Logline:** A NASA Engineer is abducted by aliens, only for her captors to suddenly die. She must try to convince the ship's computer system to send her home while facing a catastrophic dilemma in the process.

## ABDUCTED AND ALONE

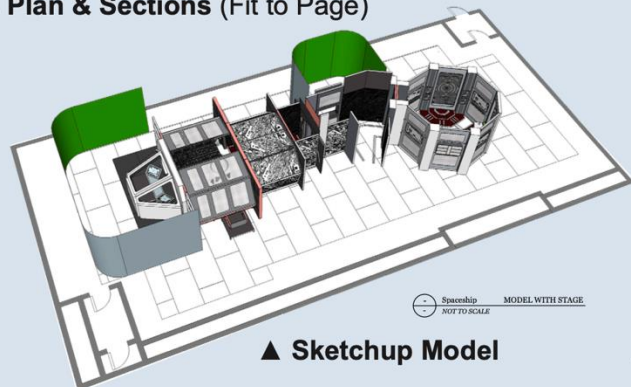
Graduate Thesis - Stage Build

Film Still

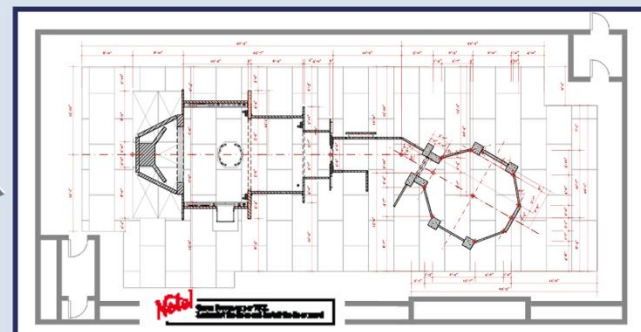




▲ Plan & Sections (Fit to Page)



▲ Sketchup Model



▲ Stage Plan (Fit to Page) Medium: Sketchup, Layout

► Detail List

| No. | Detail Contents  | SHEET |
|-----|--|-------|
| D1  | Lab Re-Building  | 2     |
| D2  | Sliding Door (Corridor - Bridge)                             | 3     |
| D3  | Bridge Bulbhead  | 4     |
| D4  | Bridge Side Wall   | 4     |
| D5  | Modifications to Stock Bridge Bulkhead & Fixing of Platforms | 5     |
| D6  | Andrew Bridge Header   | 4     |
| D7  | Andrew Control Panel   | 5     |
| D8  | Lease for Center   | 6     |
| D9  | Corridor Window Wall   | 3     |
| D10 | Corridor Windows   | 3     |
| D11 | Lab Stock Buildings  | 3     |
| D12 | Floor Layout   | 6     |

► Stock Unit List

| No.  | Stock Unit Contents          | QTY. |
|------|------------------------------|------|
| (1)  | POD Doors                    | 2    |
| (2)  | COLD COLD MAN Plats          | 11   |
| (3)  | ANDREW Plats                 | 11   |
| (4)  | None Case of Stock Spaceship | 3    |
| (5)  | Wallows                      | 3    |
| (6)  | E. Lower Walls               | 3    |
| (7)  | C. Corridor                  | 3    |
| (8)  | B. Bulbhead                  | 3    |
| (9)  | Stock Material               | 2    |
| (10) | 4"x8" Stock Plats            | 2    |
| (11) | 4"x4" Stock Plats            | 2    |
| (12) | 2"x2" Stock Plats            | 1    |
| (13) | 2"x2" Stock Plats            | 1    |
| (14) | 1/2"x1/2" Stock Plats        | 1    |
| (15) | 4"x4" Stock Plats            | 5    |
| (16) | 2"x2" Columns                | 4    |
| (17) | 1"x4"x4" Columns             | 4    |
| (18) | 4"x8"x4" Platforms           | 5    |

## ABDUCTED AND ALONE

Graduate Thesis - Stage Build

Design Proposal

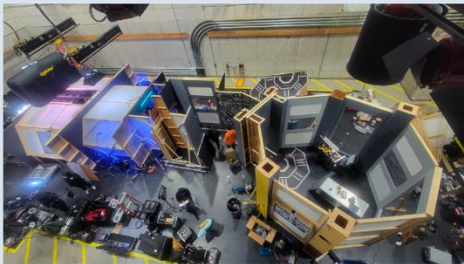




▲ Custom Flats and Details



▲ Construction Progress



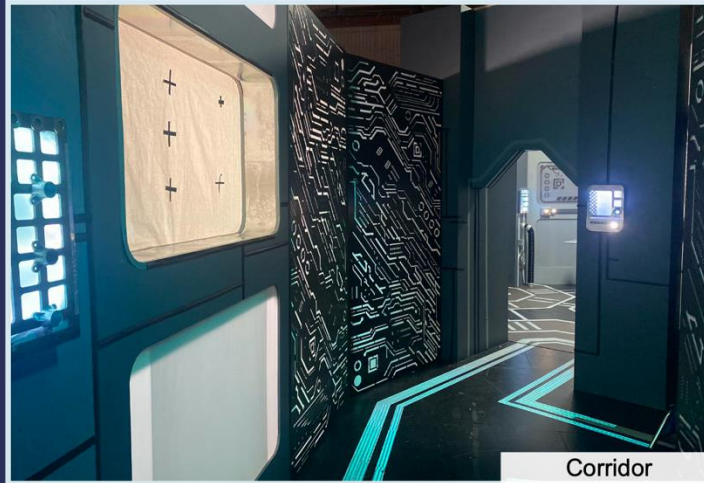
▲ Bird-Eye View



Bridge



Reversed Angle of Bridge



Corridor



Lab



◀ Film Stills

▲ Set Photos

## ABDUCTED AND ALONE

Graduate Thesis - Stage Build

Construction, Set Photos & Film Stills









“Rocket” Thesis Film – Int. Barn Stills





“Rocket” Thesis Film - Stills



# PEELING OFF



// Set Photo | Location



// Set photo | Stage



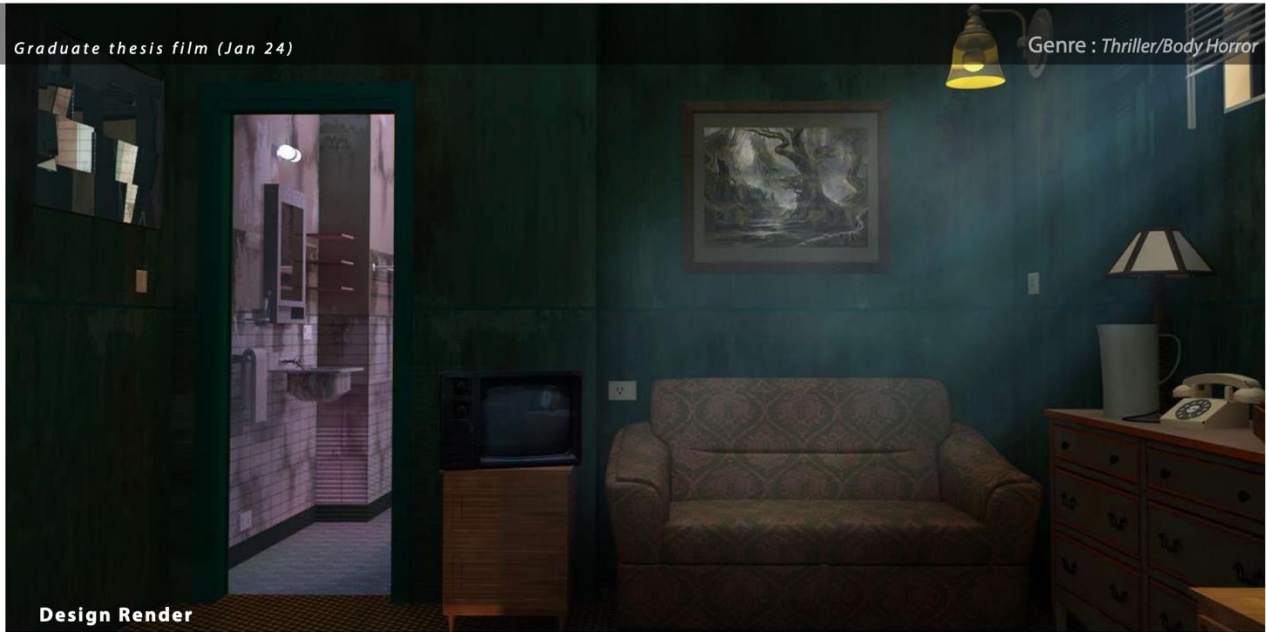
// Still | Stage



// Still | Stage

Graduate thesis film (Jan 24)

Genre : Thriller/Body Horror



Design Render



Set Built Photo





// Set photo | Stage

## COLOR THEORY

Hues of teal, green, sea greens and turquoise with hints of brown, wood shades.

To achieve this look, the **basic design** incorporates these **green hues** in the main structural elements, **wall, tiles**.

To contradict the greens we have introduced **tint of yellows, browns** and other earthy shades in the form of **furniture and set dressing**.

**Details like stained walls, mold from grouts** symbolizes the **illness growing from inside** and Greedy emotions while the design portrays **rebirth, water & nature**.



// Research Images

When a fugitive woman undergoing horrific body transformations hides out in a motel, she realizes that her battle for survival extends beyond her own self.

| Director : Yinghui Li | Writer : Ian Black & Yinghui Li | Producer : Joshua Frieder | Cinematographer : Hunter Deng |  
| Production Designer : Shantishree Patil | Editor : Chloe Brennan | Art Director : Morgan Spurr | Prosthetics : Jingjing Qing |

Project designed in AutoCAD | Sketch-up | Layout | Podium | Photoshop |

Peeling Off

## DESIGN THEORY

| RECEPTION       | BEDROOM              | BATHROOM          |
|-----------------|----------------------|-------------------|
| <u>Design</u>   | <u>Design</u>        | <u>Design</u>     |
| Heavy furniture | Distressed Walls     | Vulnerable        |
| Closed openings | No Direct reflection | Direct reflection |
| Opaque          | Blurry               | Rusty             |
| Proportion      | Disgust              | Oxidized          |
| <u>Texture</u>  | <u>Texture</u>       | <u>Texture</u>    |
| Rough           | Matte                | Shiny             |
| Non reflective  | Semi-reflective      | Reflective        |



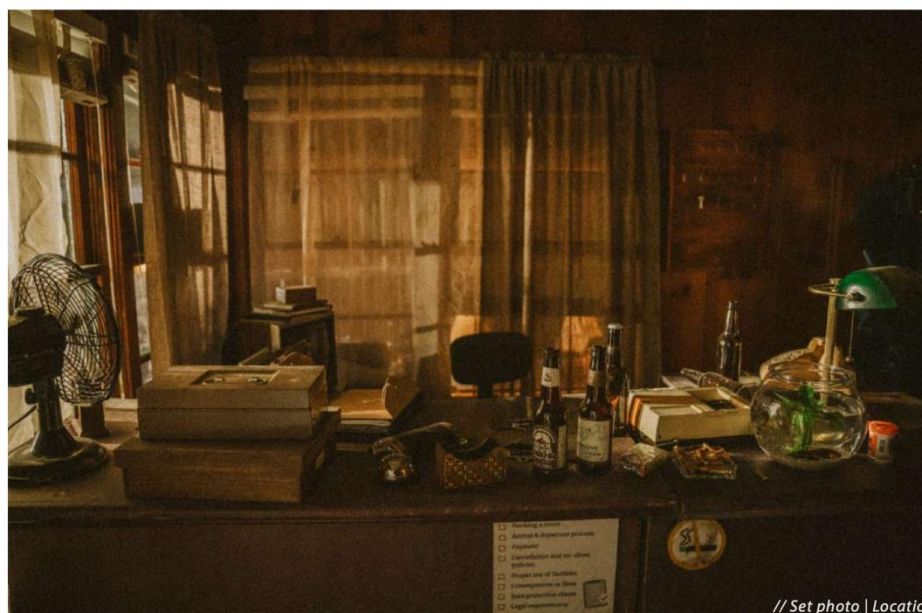
// Paint and Aging Samples



// Motel Room Sketch-up view



// Reception Sketch-up views



// Set photo | Location

SHANTISHREE PATIL

patilshantishree.art@gmail.com | 6









**"All Quiet On The Homefront" Thesis Film - Stills**





"All Quiet On The Homefront" Thesis Film - Stills





▲ MOODBOARDS/RESEARCH



UN-DRESSED SET ▲



DRESSED SET ▲



▲ SET DRESSING SKETCH OVER LOCATION IMAGE

▼ FILM STILLS



AMERICAN BODY

Short Film



SITCOM SET

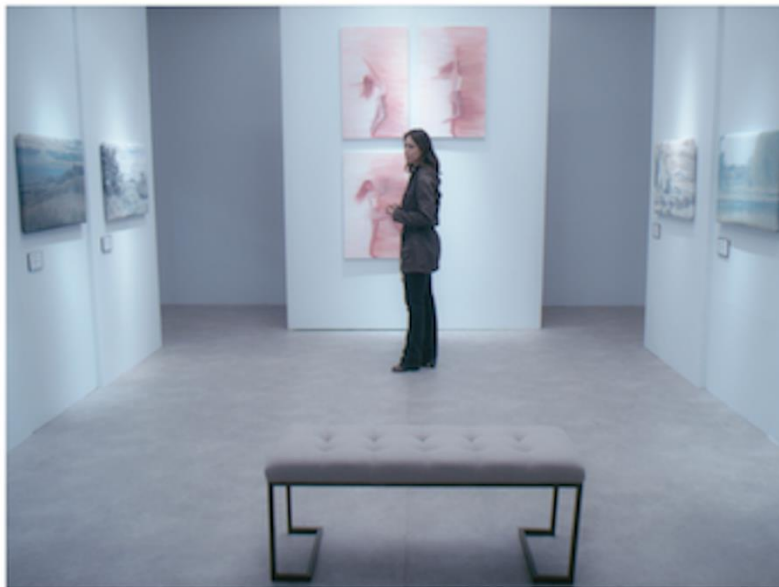
LOGLINE: To pay for a loved one's healthcare a washed-up sitcom star must cut off his arm in order to play a Vietnam veteran in a big studio film.

NASHA ANDREYEV 04

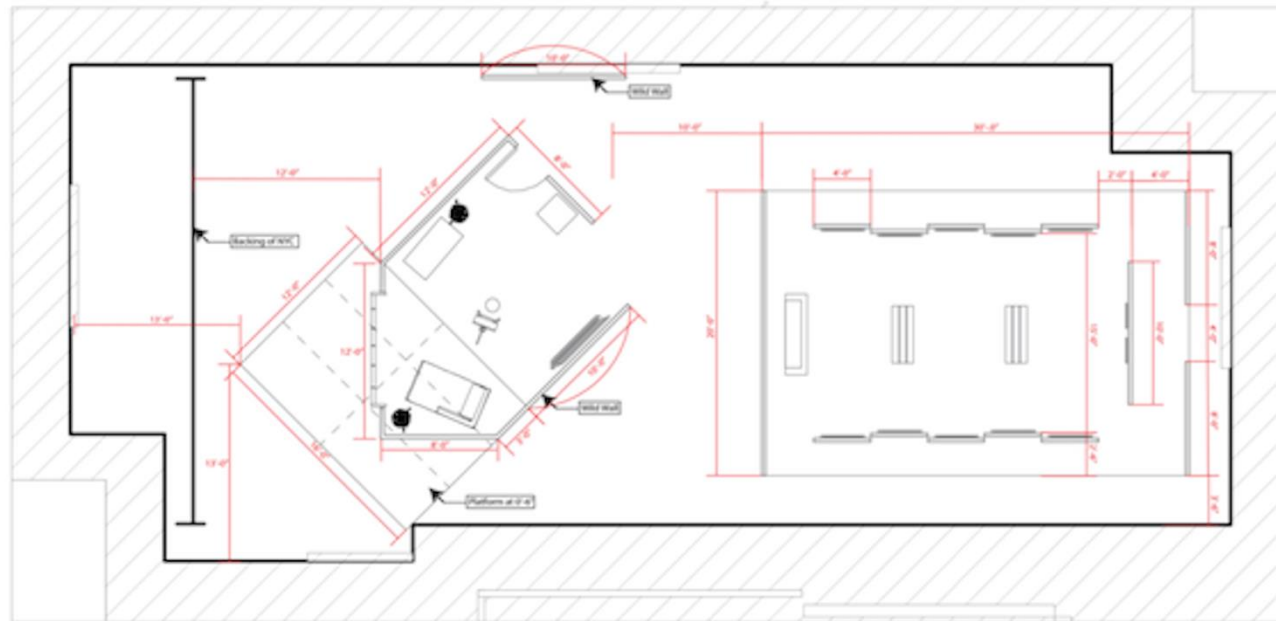




Art Studio Set



Art Gallery Set



Stage Plan for Art Studio and Art Gallery

## DESIGNED AND BUILT SET

I built two sets for a film about a young artist and the struggle of her balancing her career and her mental health.

The art gallery and the artist's studio were both built on a sound stage at Dodge College.

Medium Used:  
AutoDesk REVIT





Still



UFX Test

# ATHENA

Senior Thesis  
PRODUCTION DESIGNER

*An office housing the artificial intelligence a successful screenwriter uses to write his scripts.  
Designed to match existing location.  
Built on stage at Chapman University.*



Sketchup Render



Physical Build





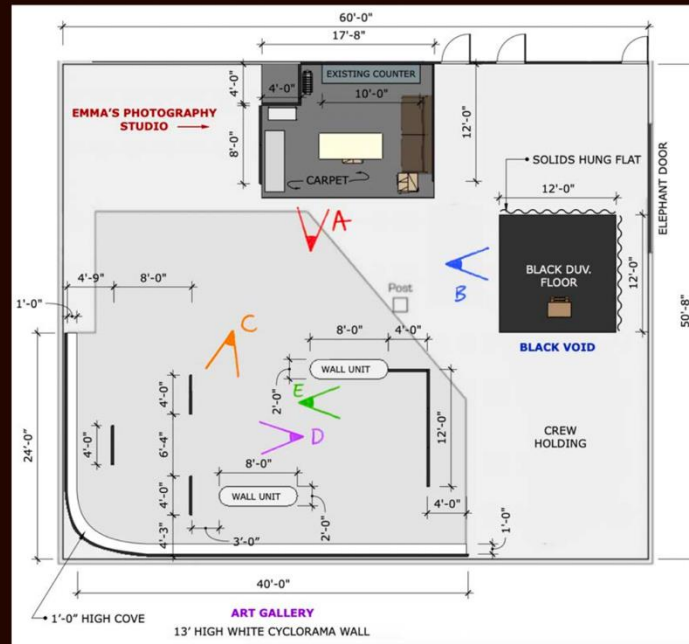
▲ Film stills - Emma's Photography Studio (camera angle A)



Film still - Black Void (camera angle B, VFX added) ▲



Film still - Art Gallery (camera angle C) ▲



▲ Location Plan  
(3 sets built and shot at photographic studio location)



▲ Emma's Studio, Prelim. sketch (overhead)



▲ Art Gallery, Prelim. sketch (camera angle D)

## ASMODEUS

**Graduate Short Film**

**Synopsis:** An aspiring photographer turns to a strange device in order to access her true creative potential.



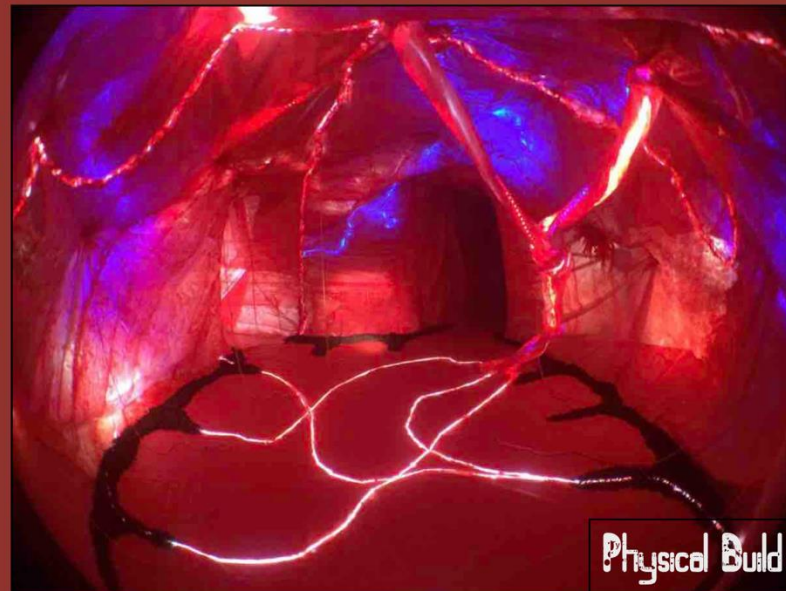


Physical Build

# Beneath Memory and Skin

PRODUCTION DESIGNER - L.A. UNIT

*Virtual Reality  
Independent Project*



Physical Build



Still

*A visual interpretation of the rebirth process. People come into the womb after dying, regenerate by connecting to umbilical chords and leave to live a new life.*





STILL



STILL

# CALAMITY FALLS

PRODUCTION DESIGNER

Senior Thesis

The greenhouse set was erected on location for exterior shots, and then transported to Chapman University's stage for all of the interior shots.

All house interiors redressed completely.



STILL



STILL



SKETCHUP MODEL

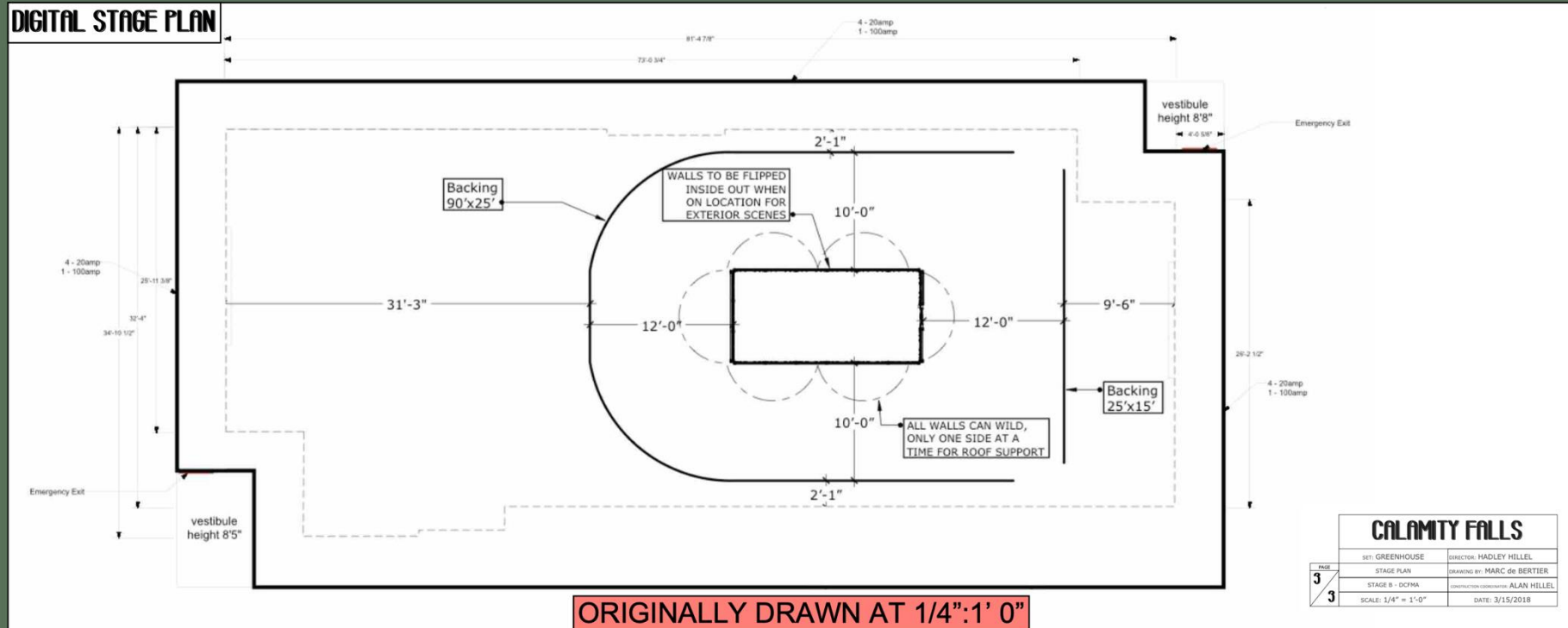


BTS PHOTO



CALAMITY FALLS

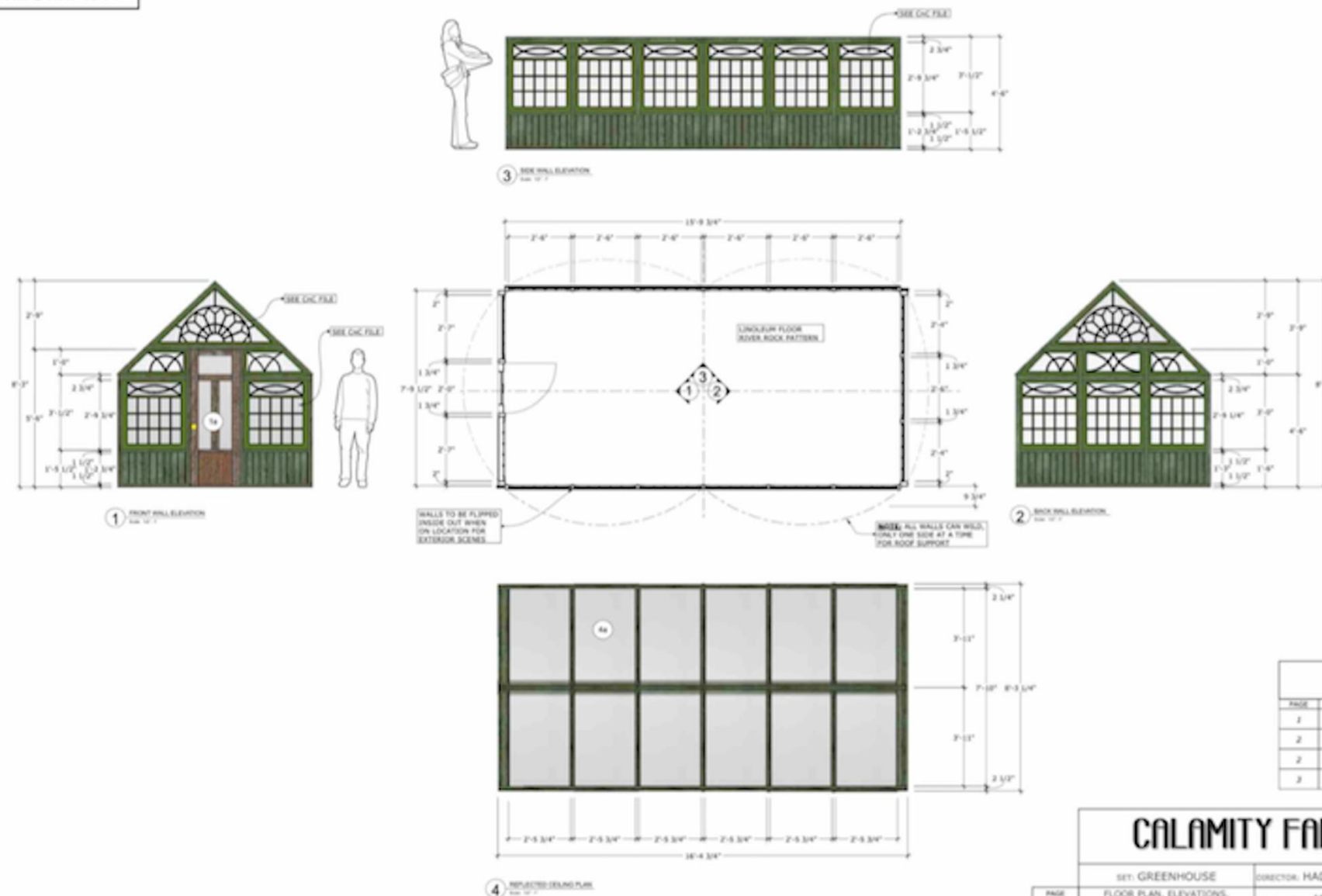
DIGITAL STAGE PLAN



ORIGINALLY DRAWN AT 1/4":1' 0"



DIGITAL DRAFTING



ORIGINALLY DRAWN AT 1/2":1' 0"

| CALAMITY FALLS                                 |                                       |
|--|---------------------------------------|
| SET: GREENHOUSE                                | DIRECTOR: HADLEY HILLEL               |
| FLOOR PLAN, ELEVATIONS, REFLECTED CEILING PLAN | DRAWING BY: MARC de BERTIER           |
| STAGE B - DCPMA                                | CONSTRUCTION COORDINATOR: ALAN HILLEL |
| SCALE: 1/2" = 1'-0"                            | DATE: 3/15/2018                       |





Set on Sound Stage A at Chapman University



Film Still



#### Color Palette



## "CANDY HOUSE"

Role: Co Production Designer in Student Film build

- Magician's Candy Store Room / Fantasy
- Written and directed by: Yiqing Hu
- Synopsis: A high school girl visits a candy shop to meet a love-transferring magician with hopes of winning her crush's heart. However, she gets trapped in an endless love cycle.



Render: Sketchup, SU Podium, Photoshop



# CECILIA

Production Designer  
Chapman University Thesis Film

## Production Stills

Set built on Stage B at Chapman University was re-dressed (and a fireplace was added) to serve as both the bedroom and the kitchen.



INT. Rancho - Kitchen



INT. Rancho - Bedroom



INT. Rancho - Kitchen



EXT. Rancho



# CECILIA\*

Production Designer  
Chapman University Thesis Film

“Cecilia” is a historical drama set in 1856 in Tovaangar (greater Los Angeles basin) and follows Cecilia, a Gabrielino (Tongva) woman working as a servant at a Mexican rancho. A squatter threatening the land sees Cecilia alone and attempts to assault her. Determined to free herself and protect her daughter, Cecilia fights back.

SU Podium Render



Production Still



\*also known as “Hasta la Raíz”

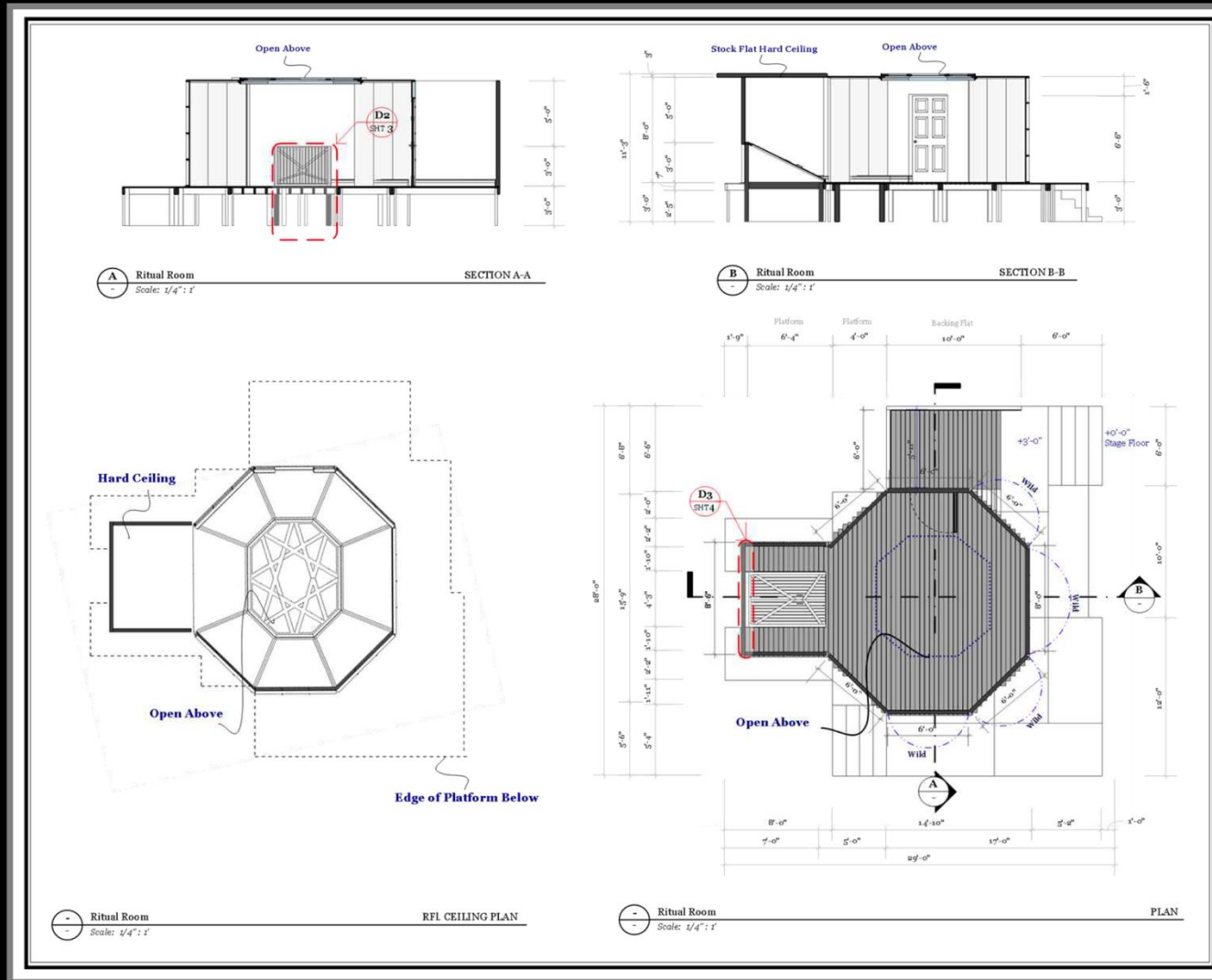


# Dreams of the Ocean

Graduate Cycle 1 Film

Production Designer / September 2021

Set Build



Set Photos - Ritual Room



◆ Ground Plan and Elevations - Ritual Room  
Modeled in Sketchup. Drafted in Layout

# Dreams of the Ocean

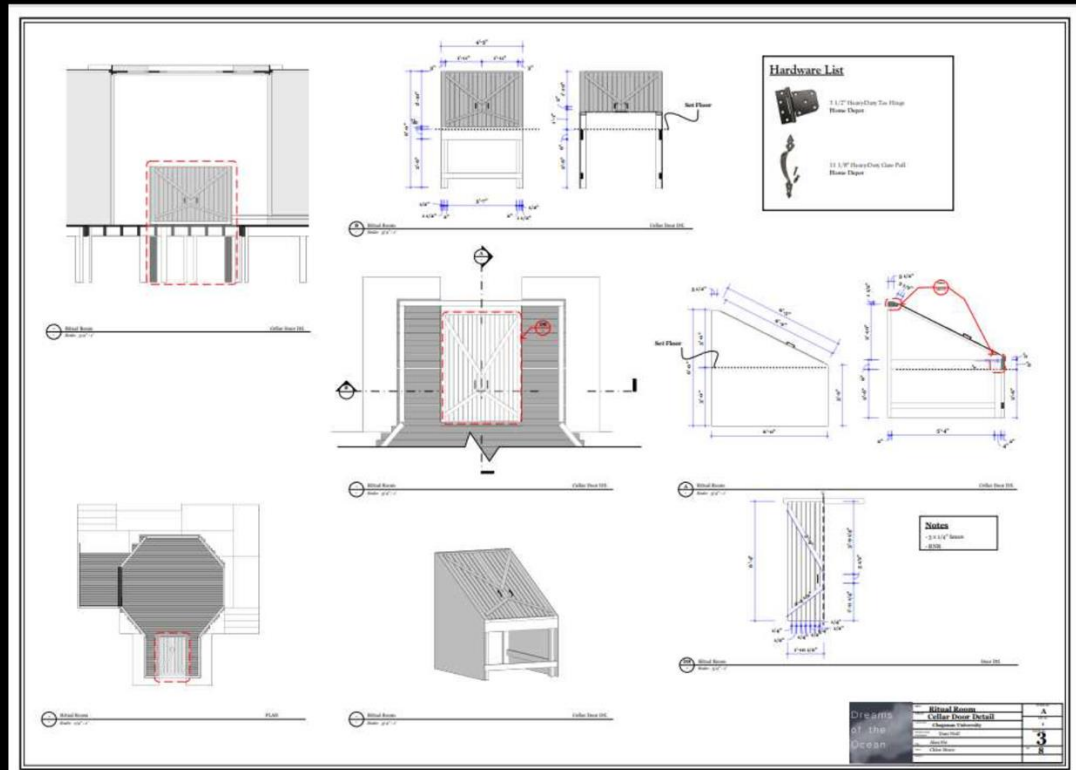
Graduate Cycle 1 Film



Film Stills - Ritual Room

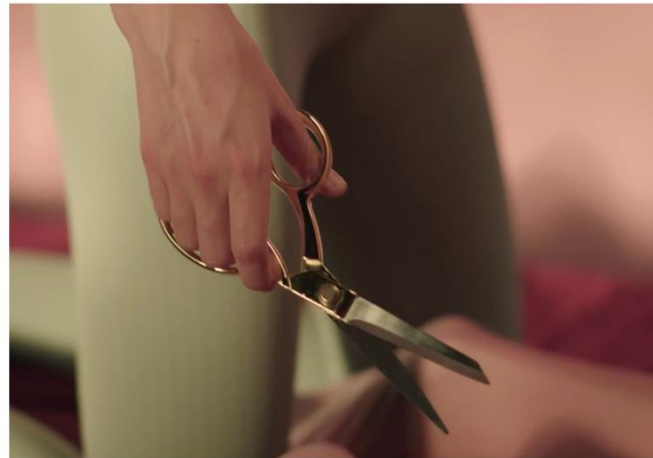


Podium Rendering - Ritual Room



Cellar Door Detail- Ritual Room





## Green Tomato

Independent Short Film

A set designed, built, and dressed on a soundstage for an experimental independent short film.







**Love's  
Last Stand.**  
Undergraduate Thesis Film

A Gameshow set during the  
apocolypse where couples  
compete to win a luxury bunker.

INT. Backstage Lounge





# Love's Last Stand

Undergraduate Thesis Film

A Gameshow set during the apocalypse where couples compete to win a luxury bunker.

Int. Gameshow Set

# Memory

## Music Video

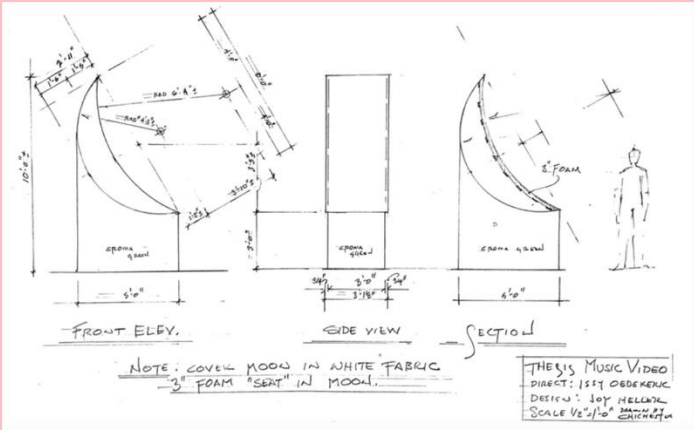
Undergraduate Thesis Film



Film Stills



Concept Art



Plans



Construction Process & Production



# MOTHER

Graduate Thesis Film

Apartment Renders - Sketchup, Podium, Photoshop



Film Still - Mother's Apartment



Podium Rendering



Podium Rendering



Podium Rendering



Film Still - Mother's Apartment



Podium Rendering







# “NAT 20!”

## CALENDAR, BUDGET, & BUILD

| MARCH<br>2022                      |   | CALENDAR MONTH: MARCH                   |  | CALENDAR YEAR: 2022            |  | 1ST DAY OF WEEK: SUNDAY    |                                    |
|------------------------------------|---|---|--|--------------------------------|--|----------------------------|------------------------------------|
| Sunday                             | Monday                                      | Tuesday                                 | Wednesday  | Thursday                       | Friday                                     | Saturday                   |                                    |
|                                    | 17  | 18                                      | 1  | 2                              | 3  | 4                          | 5                                  |
|                                    | 6   | 7                                       | 8  | 9                              | 10   | 11                         | 12                                 |
|                                    |   |   |  |                                |  |                            |                                    |
|                                    | 13  | 14                                      | 15   | 16                             | 17   | 18                         | 19                                 |
|                                    | 11:30: Meet with John & Steve in Scene Shop |   | Submit request for Stage Build                       | Stage Committee Decision       | Prep Week #1<br>9AM-10PM                   |                            | 9AM-10PM                           |
|                                    | 20  | 21                                      | 22   | 23                             | 24   | 25                         | 26                                 |
| 9AM-10PM                           | 9AM-3:30PM<br>gather materials              | 3:30PM-4:30PM<br>build 2x10 window flat |  |                                | Prep Week #2                               |                            | 9AM-10PM<br>build 2x10 window flat |
|                                    | 27  | 28                                      | 29   | 30                             | 31   |                            |                                    |
| 9AM-10PM<br>build 2x10 window flat | 9AM-3:30PM<br>build 6x8 window flat         | 3:30PM-4:30PM<br>build 6x8 window flat  | 9AM-3:30PM<br>5:30PM-4:00PM<br>build 6x8 window flat | 11:30AM-10PM<br>build painters | Prep Week #3<br>9AM-10PM<br>build painters | 9AM-10PM<br>build painters |                                    |
|                                    |   |   |  |                                |  |                            |                                    |
|                                    |   |   | Notes  |                                |  |                            |                                    |

APRIL

2022

CALENDAR MONTH

APRIL

CALENDAR YEAR

2022

1ST DAY OF WEEK

SUNDAY

| Sunday   | Monday   | Tuesday                                | Wednesday  | Thursday                         | Friday                                    | Saturday                              |
|--|--|--|--|----------------------------------|---|---------------------------------------|
|  | 27   |  | 30   | 31                               | 1   | 2                                     |
| RAA-10PM<br>build 2x10 window flat               | RAA-3:30PM<br>build 6x8 window flat                | 3:30PM-4:30PM<br>build 6x8 window flat | RAA-3:30PM<br>5:30PM-4:45PM<br>build 6x8 window flat | 11:35AM-10PM<br>build pallets    | Prep Week #3<br>RAA-10PM<br>build pallets | RAA-10PM<br>RAA-10PM<br>build pallets |
| 3  | 4  | 5                                      | 6  | 7                                | 8   | 9                                     |
| RAA-10PM<br>attach molding, breaddboard, details | RAA-3:30PM<br>attach molding, breaddboard, details | 3:30PM-4:30PM<br>paint                 | RAA-3:30PM<br>5:30PM-4:45PM<br>paint                 | 11:35AM-10PM<br>paint            | INCISORS (On Set)                         | INCISORS (On Set)                     |
| 10   | 11   | 12                                     | 13   | 14                               | 15  | 16                                    |
| INCISORS (On Set)                                | RAA-3:30PM<br>load in set                          | 3:30PM-6:30PM<br>load in set           | RAA-3:30PM<br>5:30PM-4:45PM<br>prelight & dress      | 11:35AM-10PM<br>prelight & dress | Shoot Day #1                              | Shoot Day #2                          |
| 17   | 18   | 19                                     | 20   | 21                               | 22  | 23                                    |
| Shoot Day #3                                     | RAA-3:30PM<br>strip & return materials             |  |  |                                  |   |                                       |
| 24   | 25   | 26                                     | 27   | 28                               | 29  | 30                                    |
| 1  | 2  | Notes                                  |  |                                  |   |                                       |

| MAT 201 PD Budget      |        |              |                   |   |                          |                   |               |
|------------------------|--------|--------------|-------------------|---|--------------------------|-------------------|---------------|
| STAGE BUILD            |        |              |                   |   |                          |                   |               |
| Construction Materials | number | dimensions   | sourcing          | link  | unit price               | total             | notes         |
| chairrail              | 6      | 11/16 x 3    | Ganahl Lumber Co. | N/A   | \$30.79                  | \$184.74          |               |
| window casing          | 7      | 9/16 x 1 5/8 | Ganahl Lumber Co. | N/A   | \$5.00                   | \$35.00           |               |
| 1x3 stick lumber       | 4      | 16'          | Weber             | N/A   | \$31.00                  | \$124.00          | 10 pc bundles |
| 1x6 stick lumber       | 3      | 16'          | Weber             | N/A   | \$24.00                  | \$72.00           |               |
| 2x4 stick lumber       | 8      | 16'          | Weber             | N/A   | \$10.00                  | \$80.00           |               |
| luan                   | 4      | 4 x 8        | Weber             | N/A   | \$32.00                  | \$128.00          |               |
| 3/4" plywood           | 1      | 4 x 8        | Weber             | N/A   |                          | \$76.99           |               |
| beadboard              | 12     | 4 x 8        | Home Depot        | N/A   | \$23.00                  | \$276.00          |               |
|                        |        |              |                   |   | <b>SUBTOTAL</b>          | <b>\$976.73</b>   |               |
| Paint                  | number | dimensions   | sourcing          | link  | unit price               | total             | notes         |
| green wall paint       | 4      | N/A          | Home Depot        | <a href="https://www.hom">https://www.hom</a> | \$20.00                  | \$80.00           |               |
| grey pilaster paint    | 3      | N/A          | Home Depot        | <a href="https://www.hom">https://www.hom</a> | \$15.00                  | \$45.00           |               |
| brown beadboard paint  | 2      | N/A          | Home Depot        | <a href="https://www.hom">https://www.hom</a> | \$19.00                  | \$38.00           |               |
|                        |        |              |                   |   | <b>SUBTOTAL</b>          | <b>\$163.00</b>   |               |
|                        |        |              |                   |   | <b>TOTAL</b>             | <b>\$1,139.73</b> |               |
|                        |        |              |                   |   | <b>CONTINGENCY (10%)</b> | <b>\$113.97</b>   |               |
|                        |        |              |                   |   | <b>GRAND TOTAL</b>       | <b>\$1,253.70</b> |               |



- I led construction of set pieces in Dodge College's scene shop
- Built finished set on Dodge College sound stage





**of You**  
Fantasy garden room for  
graduate thesis film

Built three wall set  
with printed backing  
Film stills



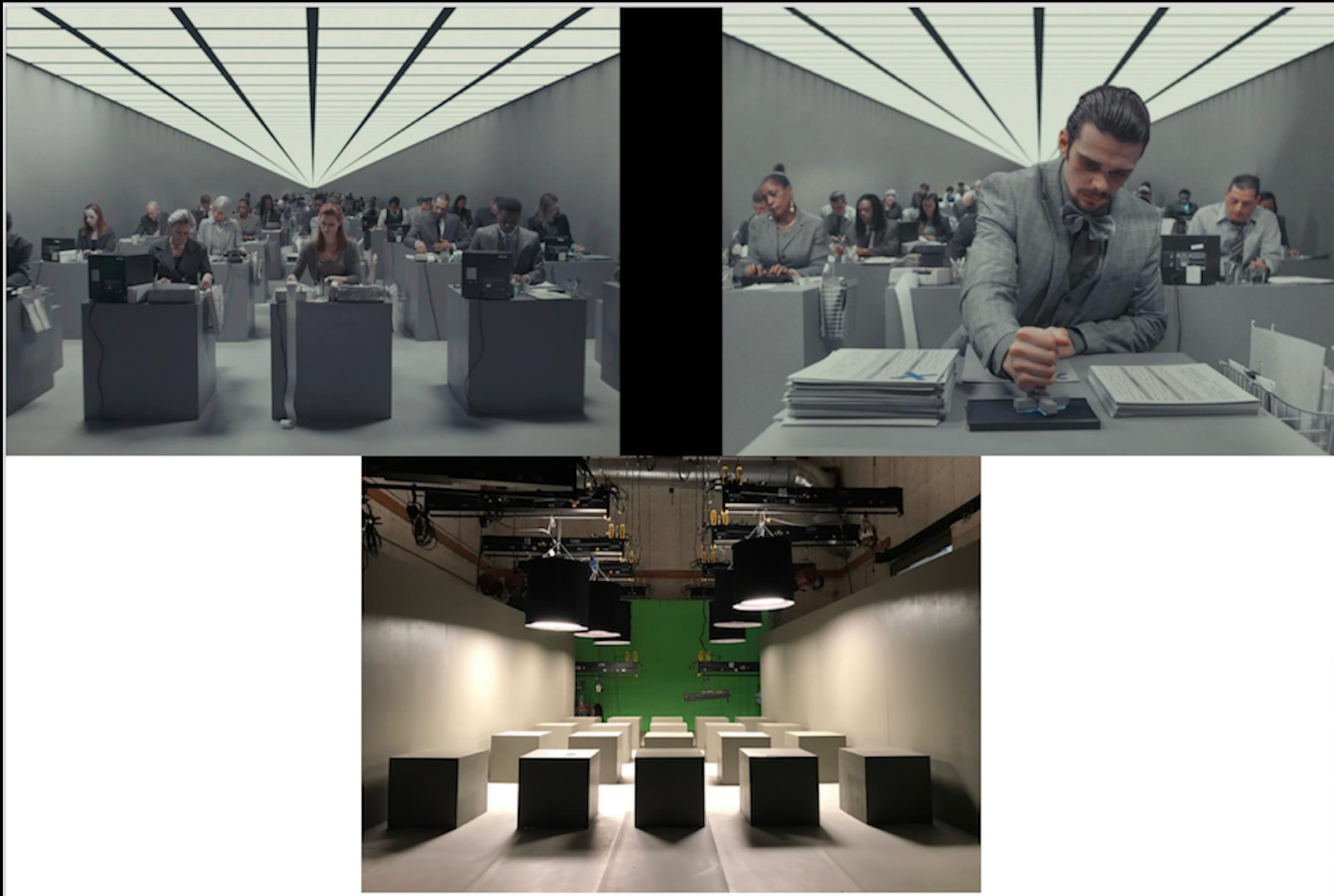


# Outer West

Virtual Art Department

Synopsis: In a futuristic desert world, a space cowboy and a 14-year-old girl play their final game of chess as they wait to be exterminated by the new world order, Alpha Bay. They must decide whether to run or fight for what they believe in.





- Thesis film, Pasajeros en Trance





Pasajeros en trance





- Pasajeros En Trance







- Pasajeros En Trance





**Role Play**

**ROLE PLAY**

Graduate Thesis Musical Film

Conceptual Drawings/  
Research



◀ MOODBOARDS/RESEARCH

MASHA ANDREYEV 13



CONCEPT ILLUSTRATION.  
SKETCHUP AND PROCREATE



## Role Play

### ROLE PLAY

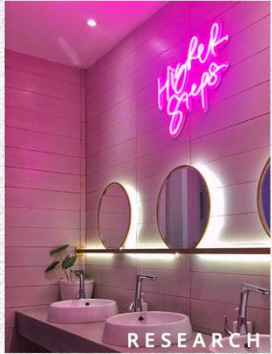
Graduate Thesis Musical Film  
Stage Build

**LOGLINE:** At a big Broadway audition, a triple-threat's obsession with impressing the director and her charming new crush blurs the lines of reality and musical fantasy, threatening to consume her in the process.



FILM STILL ▲





RESEARCH



RESEARCH



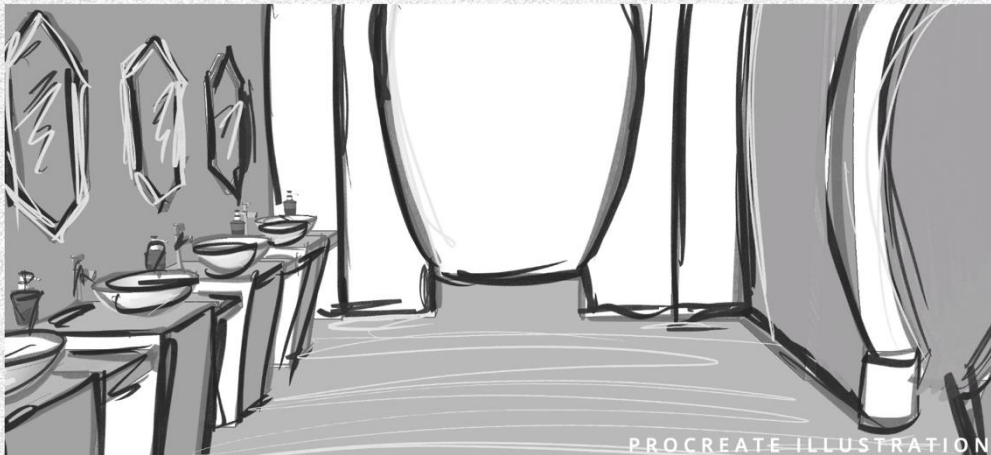
RESEARCH



RESEARCH



FILM STILL



PROCREATE ILLUSTRATION



SU PODIUM RENDER

RESEARCH, RENDER & FILM STILL AFTER CONSTRUCTION BUILD WAS COMPLETED

STORY ABOUT A BOTTLE SERVER IN LAS VEGAS- DIRECTED BY JAMES HIEM



# STEAMWRECKED

FOREGROUND MINIATURE DESIGNER

Senior Thesis

*After the ship of two lightning hunters crashes during a storm, they have to escape the dangerous desert and return to civilization.*



REFERENCE FOR SCALE

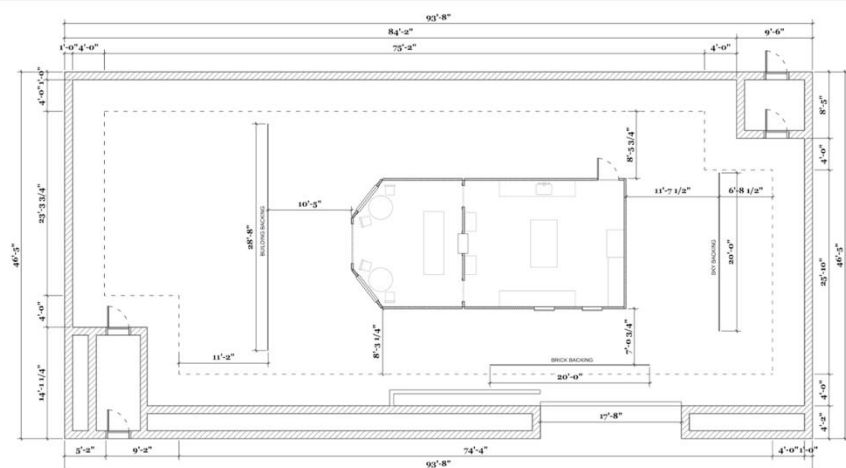
STILL



# The Art of Baking - INT. Kitchen: Concept Art, Film Stills, Props, Stage Plan



**PROP CAKES**

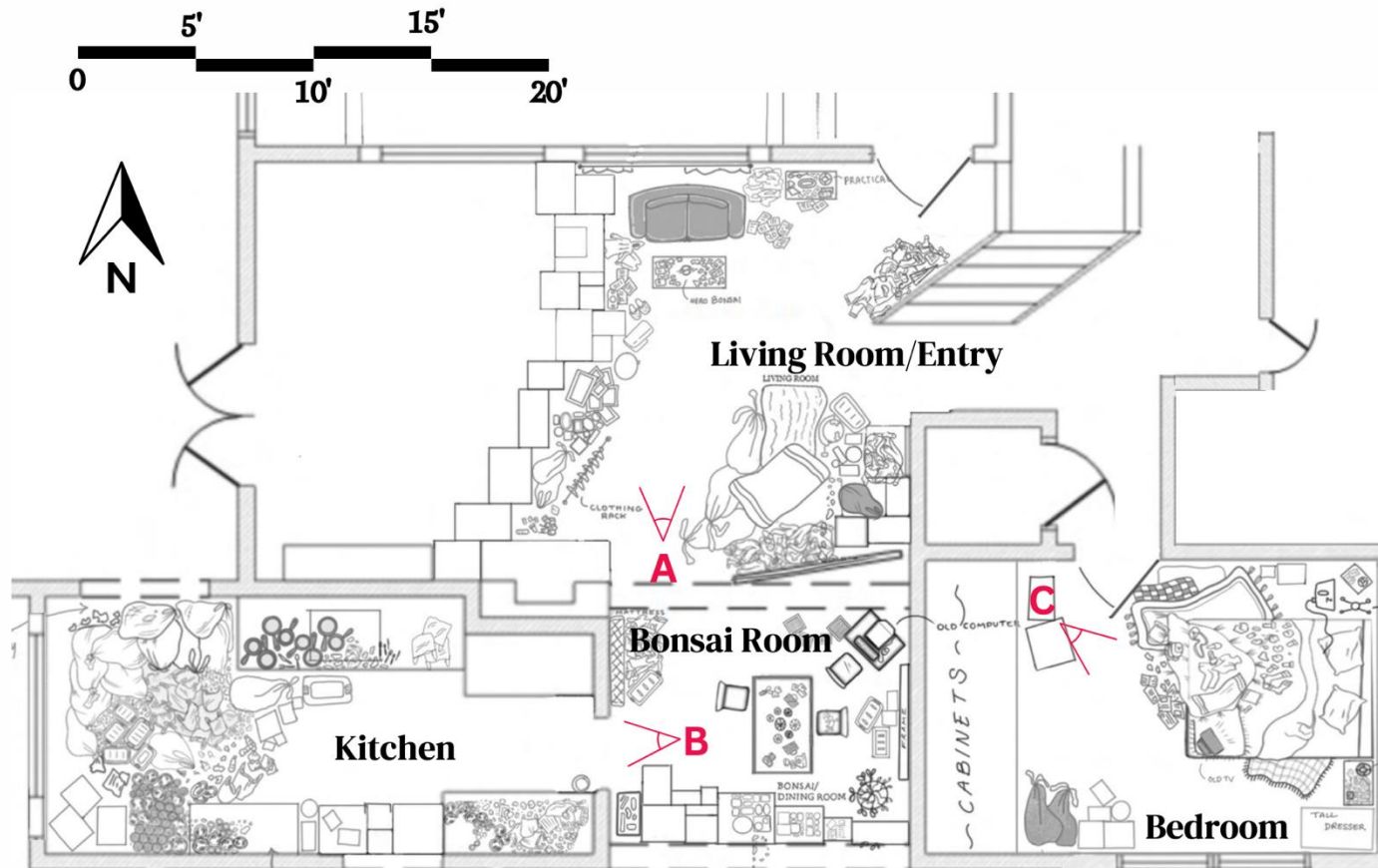


**STAGE PLAN - SOUNDSTAGE B**





An Agoraphobic woman caring for her abusive mother uses Bonsai trees as her creative outlet, transporting her to a magical forest within her mind.



Production Still A



Production Still B



Production Still C

The Bonsai

Director's Plan

SET: House Interior

Day 4-6



**“James Joyce’s The Sisters” Graduate Thesis Film, INT. Seamus’s House, INT. Flynn’s Office, & INT. Confessional (built realized sets)**



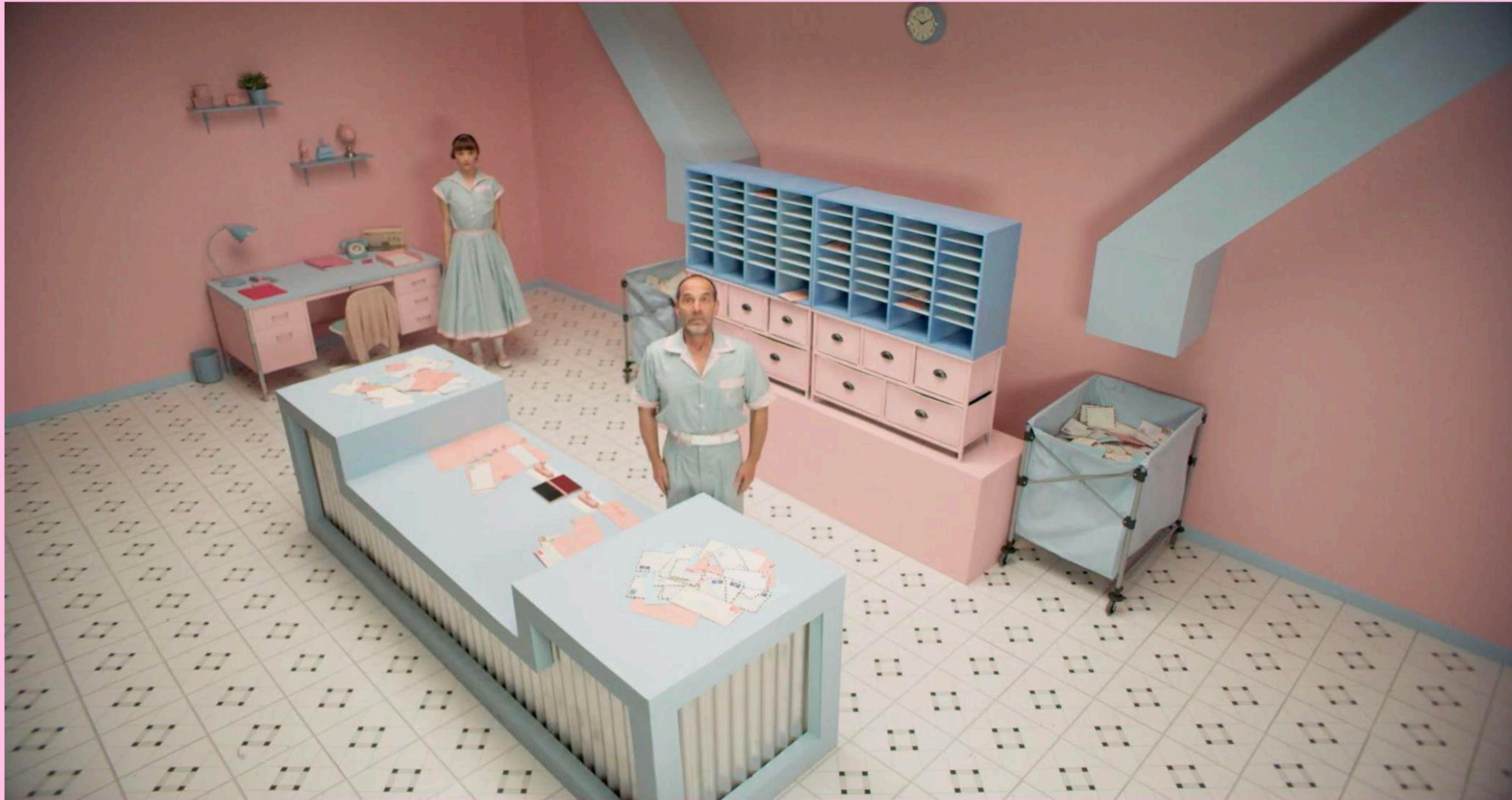


**"James Joyce's The Sisters" Graduate Thesis Film, INT. Father Flynn's House (built realized sets)**



- Thesis Film: Trudy & the Mailroom





- Trudy & the mailroom



- Trudy & the Mailroom





# TWO PAPER NIGHTINGALES

## Stills



**Design Process:** The styles and architecture of the three “rooms” in the set reflect an idealized and fantastical view of Edo Period Japan, Mughal India, and Enlightenment France. The movie was entirely shot on a soundstage. Each room had to feel unique, yet mirror each other so the overall sense of space and movement was cohesive.



# TWO PAPER NIGHTINGALES

## Stills



*Senior Thesis Film (Student Academy Award Nominee) - Production Designer, 2020*

### Synopsis:

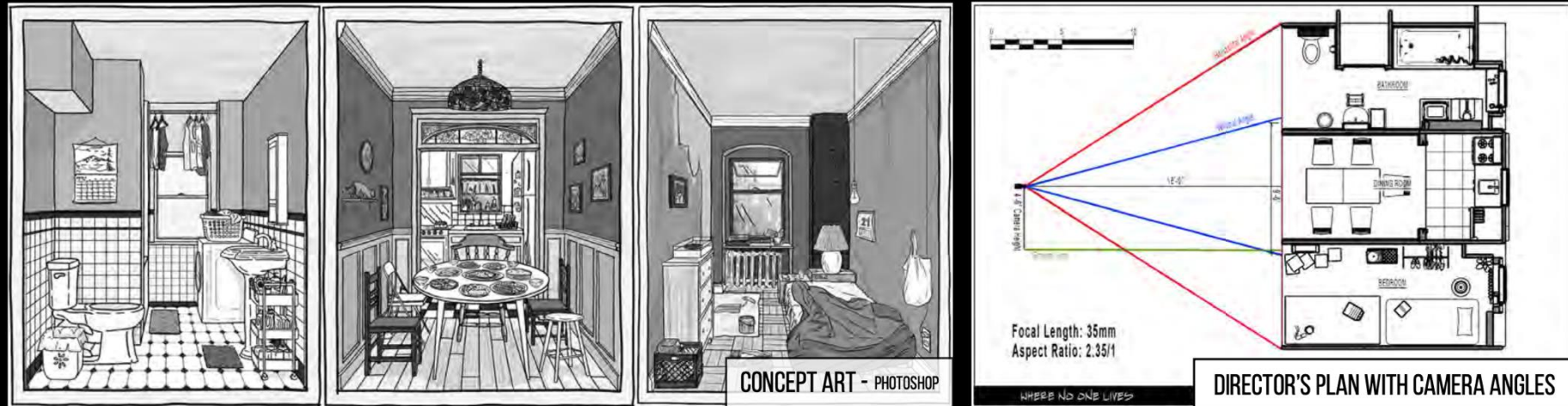
A fairy tale of two sisters torn apart by war, told from three different cultural perspectives.







PRODUCTION STILL



CONCEPT ART - PHOTOSHOP

DIRECTOR'S PLAN WITH CAMERA ANGLES

## WHERE NO ONE LIVES

2

Undergraduate Thesis - Stage Build

### SYNOPSIS:

On one night, three lonely next-door neighbors find themselves in search of connection, forgiveness, and company in an old apartment building.





## WHERE NO ONE LIVES





Shot from Set



Exterior Location



Aerial Plan View



Shot from Set

| LIGHTNING DOGS PRODUCTION DESIGN BUDGET |       |        |             |             |         |          |
|---|-------|--------|-------------|-------------|---------|----------|
| SET DECORATION                          |       |        |             |             |         |          |
| LOCATION                                | ITEM  | AMOUNT | DESCRIPTION | TOTAL PRICE | REMARKS | REVISION |
| LUNA'S ROOM                             | lamp  | 1      | ---         | ---         | CNN     | 100      |
|   | chair | 1      | ---         | ---         | CNN     | 100      |
|   | table | 1      | ---         | ---         | CNN     | 100      |
|   | chair | 1      | ---         | ---         | CNN     | 100      |
|   | chair | 1      | ---         | ---         | CNN     | 100      |
|   | chair | 1      | ---         | ---         | CNN     | 100      |
| LIGHTHOUSE INTERIOR                     | chair | 1      | ---         | ---         | CNN     | 100      |
|   | chair | 1      | ---         | ---         | CNN     | 100      |
|   | chair | 1      | ---         | ---         | CNN     | 100      |
|   | chair | 1      | ---         | ---         | CNN     | 100      |
|   | chair | 1      | ---         | ---         | CNN     | 100      |
|   | chair | 1      | ---         | ---         | CNN     | 100      |
| LANTERN ROOM                            | chair | 1      | ---         | ---         | CNN     | 100      |
|   | chair | 1      | ---         | ---         | CNN     | 100      |
|   | chair | 1      | ---         | ---         | CNN     | 100      |
|   | chair | 1      | ---         | ---         | CNN     | 100      |
|   | chair | 1      | ---         | ---         | CNN     | 100      |
|   | chair | 1      | ---         | ---         | CNN     | 100      |
| SET DEC TOTAL: \$536                    |       |        |             |             |         |          |
| BUILD                                   |       |        |             |             |         |          |
| LANTERN ROOM                            | chair | 1      | ---         | ---         | CNN     | 100      |
|   | chair | 1      | ---         | ---         | CNN     | 100      |
|   | chair | 1      | ---         | ---         | CNN     | 100      |
|   | chair | 1      | ---         | ---         | CNN     | 100      |
|   | chair | 1      | ---         | ---         | CNN     | 100      |
|   | chair | 1      | ---         | ---         | CNN     | 100      |
| GENERATOR                               | chair | 1      | ---         | ---         | CNN     | 100      |
|   | chair | 1      | ---         | ---         | CNN     | 100      |
|   | chair | 1      | ---         | ---         | CNN     | 100      |
|   | chair | 1      | ---         | ---         | CNN     | 100      |
|   | chair | 1      | ---         | ---         | CNN     | 100      |
|   | chair | 1      | ---         | ---         | CNN     | 100      |
| LENS                                    | chair | 1      | ---         | ---         | CNN     | 100      |
|   | chair | 1      | ---         | ---         | CNN     | 100      |
|   | chair | 1      | ---         | ---         | CNN     | 100      |
|   | chair | 1      | ---         | ---         | CNN     | 100      |
|   | chair | 1      | ---         | ---         | CNN     | 100      |
|   | chair | 1      | ---         | ---         | CNN     | 100      |
| BUILD TOTAL: \$2,096.65                 |       |        |             |             |         |          |
| PROPS                                   |       |        |             |             |         |          |
| LANTERN ROOM                            | chair | 1      | ---         | ---         | CNN     | 100      |
|   | chair | 1      | ---         | ---         | CNN     | 100      |
|   | chair | 1      | ---         | ---         | CNN     | 100      |
|   | chair | 1      | ---         | ---         | CNN     | 100      |
|   | chair | 1      | ---         | ---         | CNN     | 100      |
|   | chair | 1      | ---         | ---         | CNN     | 100      |
| GENERATOR                               | chair | 1      | ---         | ---         | CNN     | 100      |
|   | chair | 1      | ---         | ---         | CNN     | 100      |
|   | chair | 1      | ---         | ---         | CNN     | 100      |
|   | chair | 1      | ---         | ---         | CNN     | 100      |
|   | chair | 1      | ---         | ---         | CNN     | 100      |
|   | chair | 1      | ---         | ---         | CNN     | 100      |
| LENS                                    | chair | 1      | ---         | ---         | CNN     | 100      |
|   | chair | 1      | ---         | ---         | CNN     | 100      |
|   | chair | 1      | ---         | ---         | CNN     | 100      |
|   | chair | 1      | ---         | ---         | CNN     | 100      |
|   | chair | 1      | ---         | ---         | CNN     | 100      |
|   | chair | 1      | ---         | ---         | CNN     | 100      |
| PROPS TOTAL: \$82.00                    |       |        |             |             |         |          |
| ART DEPARTMENT TOTAL: \$2,714.65        |       |        |             |             |         |          |

Itemized Art Department Budget



Color Palette



Still with Pre-Vis VFX



Still with Pre-Vis VFX



Shot from Set

## Lightning Dogs (2019)

Shots from Set, Exterior Location, Director's Plan, Itemized Budget, Stills with Pre-Vis, Color Palette

Short Film

Medium: Sketchup and Podium

Alex Fowler



**BEFORE**

# VEIL

TV Pilot

**PRODUCTION DESIGNER**

*When her twin goes missing, Fiona must navigate her dystopian, post-apocalyptic world to rescue her sister.  
A total of 14 sets, all locations completely dressed.*



**AFTER - STILL**



