



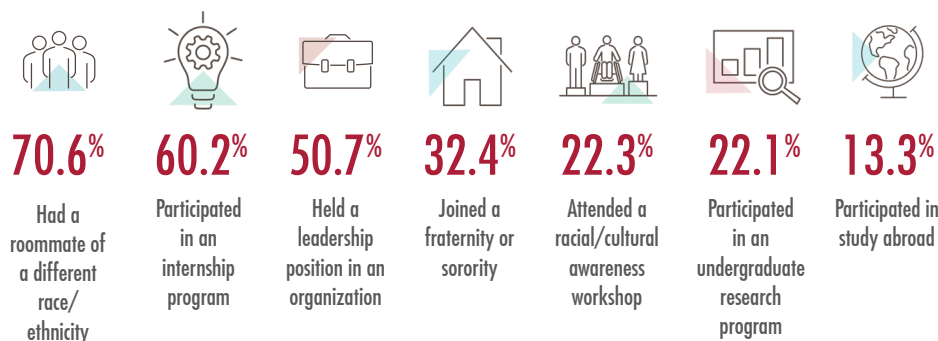
SNAPSHOT

AN INFOGRAPHIC NEWSLETTER OF THE INSTITUTIONAL RESEARCH AND DECISION SUPPORT (IRADS) OFFICE

2023 COLLEGE SENIOR SURVEY (CSS)

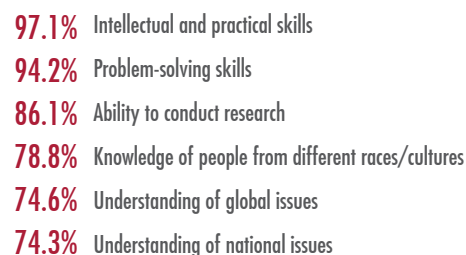
Each year, thousands of students across the United States complete the College Senior Survey, a national survey from the Higher Education Research Institute at UCLA. The results in this newsletter profile Chapman University's graduating class of 2022. The CSS was administered in Spring 2023. Over 326 graduating seniors completed the survey online, resulting in a 17% response rate.

ACTIVITIES DURING COLLEGE Percent reporting "Yes"



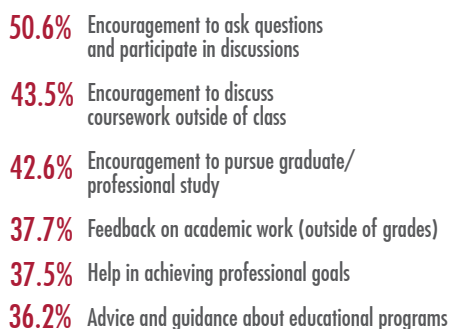
CHAPMAN UNIVERSITY CONTRIBUTED TO MY

Percent reporting "Agree" or "Strongly Agree" on a 4-pt scale



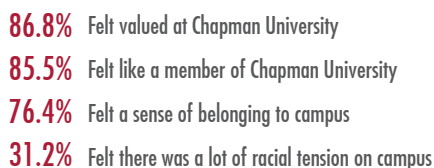
FACULTY-STUDENT INTERACTION

Percent reporting professors "Frequently" on a 3-pt scale provided them with:



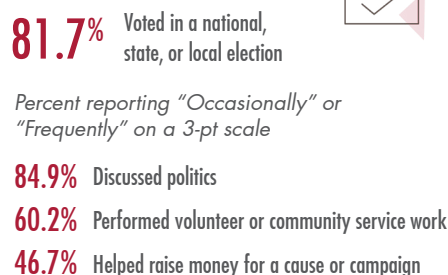
SENSE OF BELONGING AND INCLUSION

Percent reporting "Agree" or "Strongly Agree" on a 4-pt scale



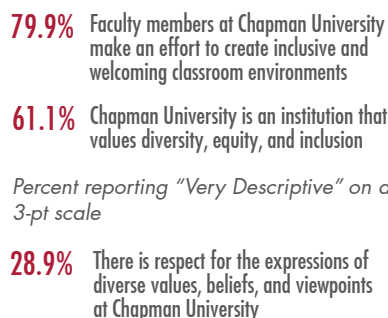
CIVIC ENGAGEMENT

Percent reporting "Yes"



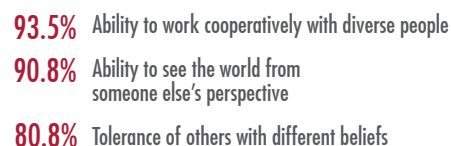
CAMPUS CLIMATE

Percent reporting "Agree" or "Strongly Agree" on a 5-pt scale



DIVERSITY-RELATED STRENGTHS

Percent reporting "Somewhat Strong" or "A Major Strength" on a 5-pt scale



MENTAL HEALTH, INSECURITY, AND CHALLENGES WHILE IN COLLEGE

Percent reporting "Frequently"



LIFE AFTER COLLEGE

Percent reporting "Yes"



68.2% Plan to work full-time after graduation

82.1% Feel prepared for employment
(Percent reporting "Agree" or "Strongly Agree")

28.5% Plan to attend graduate school full-time after graduation

85.3% Feel prepared for graduate or advanced education
(Percent reporting "Agree" or "Strongly Agree")

WHAT IS IMPORTANT TO SENIORS WHEN CONSIDERING A CAREER PATH?

Percent reporting "Very Important" or "Essential" on a 4-pt scale

92.8% Stable, secure future

91.7% Work/life balance

78.9% Availability of jobs

69.6% High income potential

68.6% Ability to pay off debt

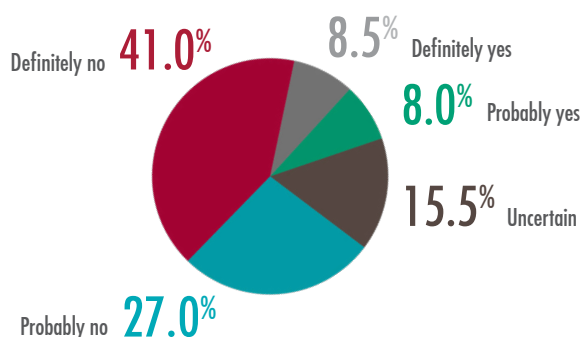
65.9% Expression of personal values

65.3% Creativity and initiative

64.2% Leadership potential



WILL YOU PURSUE A SCIENCE-RELATED RESEARCH CAREER?



SCIENCE SELF-CONCEPT

Percent reporting "Agree Somewhat" or "Strongly Agree" on a 5-pt scale

50.5%

I derive great personal satisfaction from working on a team that is doing important research

29.8%

I have a strong sense of belonging to a community of scientists

29.2%

I feel like I belong in the field of science

27.6%

I think of myself as a scientist

CAREER GOALS

Percent reporting "Very Important" or "Essential" on a 4-pt scale



51.1%

Obtaining recognition from my colleagues for contribution to my special field



41.4%

Becoming a community leader



28.1%

Creating artistic work



24.4%

Writing original works (poems, novels, etc.)

ARTIST SELF-CONCEPT

Percent reporting "Agree Somewhat" or "Strongly Agree" on a 5-pt scale

43.7% I think of myself as an artist

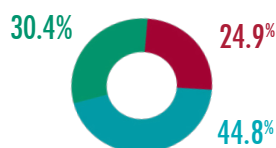
31.0% I have a strong sense of belonging to a community of artists

RESEARCH AND CREATIVE ACTIVITY

Frequently

Occasionally

Not at all



How often did professors provide you with an **opportunity to work** on a research project or creative activity (e.g., an original piece of film, dance, music, creative writing, or other)?



Since entering college, how often did you **work collaboratively** on a research project or creative activity (e.g., an original piece of film, dance, music, creative writing, or other) with a professor?

61.2%

Satisfaction with the encouragement and support you received from Chapman University faculty to do research and/or participate in creative activities.

Percent reporting "Satisfied" or "Very Satisfied" on a 5-pt scale

SATISFACTION

Percent reporting "Satisfied" or "Very Satisfied" on a 5-pt scale

85.7% Overall college experience

Percent reporting "Agree" or "Strongly Agree" on a 4-pt scale

87.2% If asked, I would recommend this college to others



ALUMNI ENGAGEMENT

Percent reporting "Agree" or "Strongly Agree" on a 4-pt scale



35.5%

I will give Chapman University money as an alum



64.4%

I plan to remain engaged with Chapman University as an alum (e.g., campus events, fundraising, admissions)