



CHAPMAN UNIVERSITY

SNAPSHOT

AUGUST 2016

AN INFOGRAPHIC NEWSLETTER OF THE INSTITUTIONAL RESEARCH OFFICE

2015 Interfaith Diversity Experiences & Attitudes Longitudinal Survey (IDEALS)

In the Fall of 2015, Chapman University was one of 122 institutions across the United States to participate in a longitudinal study focused on understanding students' encounters with religious, spiritual, and worldview diversity on college campuses. The results in this newsletter profile Chapman University's 2015 first time, full time entering students who completed the IDEALS survey. Over 280 freshmen completed the survey online resulting in a 20% response rate. The peer group comparisons are based on IDEALS respondents attending Carnegie Classification: Master's Colleges and Universities (larger programs).



2015 ENTERING FRESHMEN WORLDVIEWS

CU: 27.1%	CU: 20.7%	CU: 20.0%	CU: 12.4%	CU: 4.1%	CU: 16.0%
Christianity (Protestant)	Christianity (Roman Catholic)	Agnosticism/Atheism	Nonreligious/None	Judaism	Other Worldview
Peer: 28.5%	Peer: 24.2%	Peer: 15.9%	Peer: 8.8%	Peer: 1.5%	Peer: 21.1%

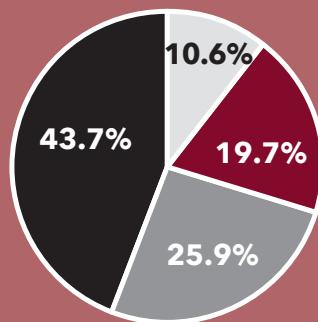
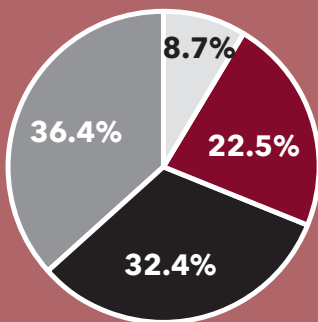
Worldview
 "...your guided life philosophy, which may be based on a particular religious tradition, a nonreligious perspective, your ideological views, aspects of your cultural background and personal identity or some combination of these."

Icons: Cross, Crescent and Star, Human Figure, Om symbol, Star of David, Wheel of Dharma

SPIRITUAL AND RELIGIOUS SELF-IDENTIFICATION

Chapman University

Peer Group



- Religious, but not spiritual
- Neither spiritual nor religious
- Both religious and spiritual
- Spiritual, but not religious

ELEMENTS INFLUENCING WORLDVIEW

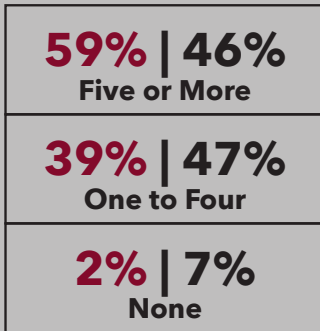
Percent reporting "Most influential"

Chapman University		Peer Group
40.4%	Family Background and Traditions	34.6%
15.3%	Religious Beliefs/Faith	27.3%
12.0%	Nonreligious Beliefs/Perspectives	9.8%
11.6%	Philosophical Tradition	7.7%

HOW MANY CLOSE FRIENDS ARE OF A DIFFERENT RELIGIOUS/ NONRELIGIOUS PERSPECTIVE?



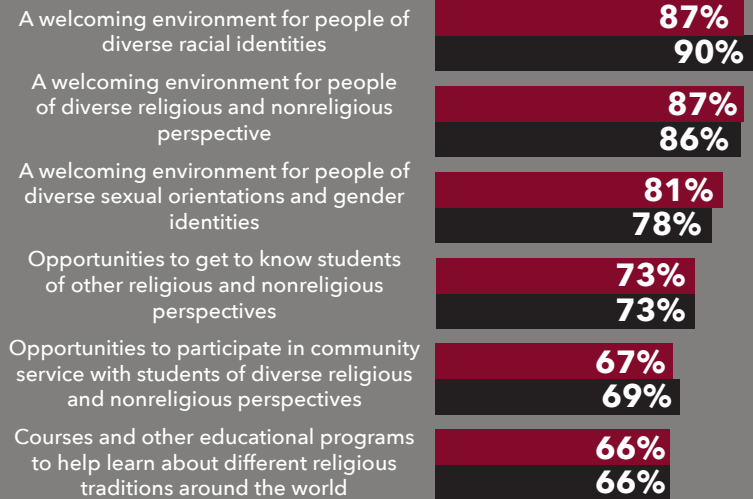
Chapman University | Peer Group



IMPORTANT COLLEGE EXPECTATIONS

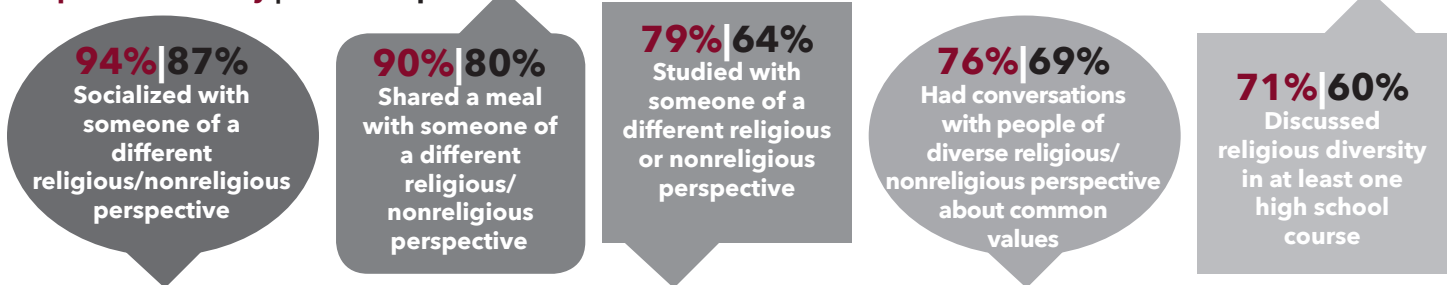
Percent reporting "Very important" or "Important"

■ Chapman ■ Peer Group



PRE-COLLEGE ENGAGEMENT WITH DIVERSE GROUPS

Chapman University | Peer Group



ATTITUDES TOWARD DIVERSE GROUPS

"I have a positive attitude toward people in this group"

Percent reporting "Agree somewhat" or "Agree strongly"

