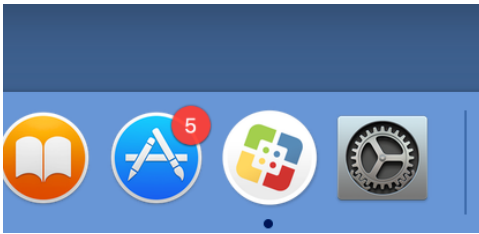


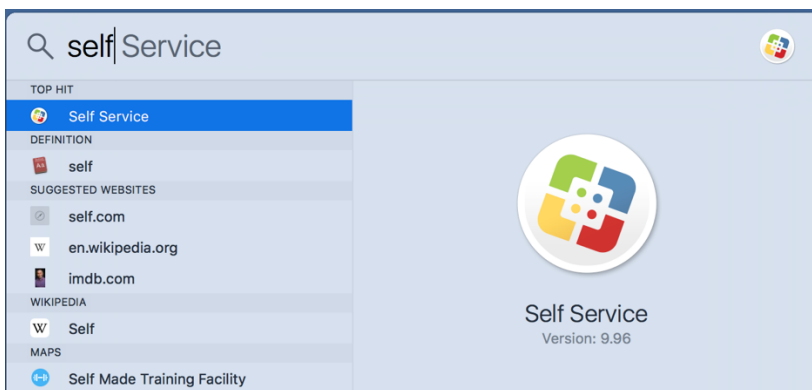
How to Install Panopto via Self Service

1. Launch the Self Service application:

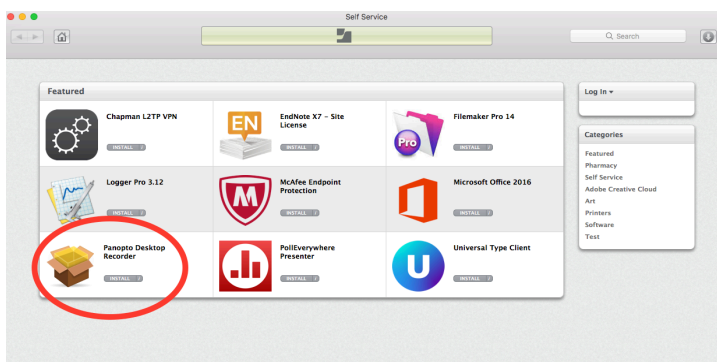
- a. If the application is in your Dock, click on the Self Service icon to launch it.



- b. If the application is not in your Dock, you can find Self Service in your Applications folder or launch it by searching for it via Spotlight.



2. Look for Panopto on the main Self Service page, and click the Install button.



3. Self Service will download and run the Panopto installer in the background. When it is complete, the Panopto application will be in your Applications folder. Double-click the Panopto icon to launch the application and login.