

## CHAPMAN UNIVERSITY MFA FACULTY



### MARK AXELROD

Director of the John Fowles Center for Creative Writing & Two-Time Fulbright Winner  
**Fiction, Screenwriting**

*Dante's Foil and Other Sporting Tales; Constructing Dialogue*



### ANNA LEAHY

Director, MFA in Creative Writing; Director, Tabula Poetica; Winner of Wick Poetry Prize & Ninth Letter Nonfiction Prize  
**Poetry, Nonfiction**

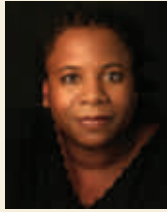
*Tumor; Aperture; Generation Space*



### RICHARD BAUSCH

Winner of the Rea Award for the Short Story & Dayton Literary Peace Prize  
**Fiction**

*Before, During, After; Peace; The Norton Anthology of Short Fiction*



### MILDRED LEWIS

Selected for 2017-18 PlayGround-LA Writers Pool  
**Playwriting, Screenwriting, Graphic Novels**

*Transforming Silence(s); Visitation; Bleed Black Bleed Blue Bleed*



### JAMES BLAYLOCK

Associate Director, MFA Winner of two World Fantasy Awards  
**Fiction**

*The Aylesford Skull; The Adventures of Langdon St. Ives; Homunculus*



### MARTIN NAKELL

Winner of the Gertrude Stein Award  
**Experimental Fiction and Poetry**

*The Desert Poems of Southern California; The Assignment: Why Am I Writing This Essay?*



### ALICIA KOZAMEH

Winner of the Crisis Award for Short Story  
**Fiction (English and Spanish)**

*Steps Under Water; 259 Leaps, The Last Immortal; Ofrenda de propia piel*



### TOM ZOELLNER

Winner of the American Institute of Physics Science Writing Award  
**Nonfiction**

*Train: Riding the Rails That Created the Modern World; A Safeway in Arizona; Uranium*



**Wilkinson College of Arts, Humanities, and Social Sciences**

## MFA CREATIVE WRITING

**The MFA in Creative Writing at Chapman University encourages students to write boldly, read thoughtfully, and live vibrantly.**

Our students and our faculty—Mark Axelrod, Richard Bausch, James P. Blaylock, Alicia Kozameh, Anna Leahy, Mildred Lewis, Martin Nakell, and Tom Zoellner—are here to bring ideas to life in words and share those words with the world.

Whether you're interested in fiction, poetry, creative nonfiction, screenwriting, or a combination of genres, the MFA at Chapman University invites you to write better than you ever thought you could. The MFA is designed so that you can create a portfolio of possibilities for your life and for your career.

*"It's a natural, positive, encouraging community."*

**- Erica Hoffmeister, MFA Alum**

## WHY THIS MFA?

- Aspects of a Writer, an innovative course that introduces students to a life of writing and publishing opportunities.
- The most aesthetically wide-ranging faculty of any MFA in the country.
- More genre options for students, including Fiction, Poetry, Creative Nonfiction, Screenwriting, and Experimental Writing.
- Well-published, award-winning authors who continue to write and publish alongside the MFA students they teach.
- Graduate Teaching Assistantships and other jobs-oriented Graduate Assistantships for select students in the second year of study.
- Annual Literary Events such as WordTheatre® and the Tabula Poetica Reading Series every fall, the John Fowles Center Reading Series every spring, and Pub(lishing) Crawl in April.
- Digital Humanities, as a way to re-envision English studies.
- Our MFA alums find employment in related fields of writing, marketing, and teaching and are publishing books and work in journals and magazines.

**VISITING WRITERS:** Isabel Allende, Victoria Chang, Karen Joy Fowler, Maxine Hong Kingston, Kim Stanley Robinson, and more

**PRESIDENTIAL FELLOWS:** Carolyn Forché and Rebecca Skloot

## CHAPMAN.EDU/MFA-CREATIVE-WRITING

For more information contact Graduate Programs Coordinator Allison DeVries  
devries@Chapman.edu (714) 997-6752

ONE UNIVERSITY DRIVE • ORANGE, CALIFORNIA 92866

## ADMISSION REQUIREMENTS:

All applicants must provide the following materials:

- Official transcripts from ALL degree-granting (bachelor's and higher) colleges and universities attended. An official transcript in a sealed envelope that you have received from your college or university is acceptable.
- An essay expressing your reasons for wanting to join the MFA program. What are your writing and career goals, and how will this particular degree from Chapman University help you reach those goals? Your essay should be double spaced, size 12 font, and 1–2 pages in length.
- Two letters of recommendation that speak to your academic preparation, intellectual ability, creative potential, and aptitude for graduate study.
- A portfolio of creative work. You should submit work that best represents your style and demonstrates your potential. The portfolio should include 20–30 pages of fiction or nonfiction, 10–15 pages of poetry, or the first 15 pages of a screenplay or stage play. The purpose of the portfolio is to demonstrate your creative capacity as an as an MFA student. Literature courses will also be part of the degree program, and you should be adept at writing critical essays but should not include critical writing in the MFA application unless you are applying for the Dual MA/MFA program.

## FUNDING OPPORTUNITIES

### Fellowships

Each fall, three fellowships with annual stipend of \$18,000 plus full tuition are awarded to select incoming MFA students. Additional full-tuition fellowships are available on a limited basis. All applicants are considered for these prestigious, merit-based awards.

### Assistantships

MFA and MA students who take the composition pedagogy course in their first year of study can apply to the Graduate Teaching Associate program. GTAs develop their own composition courses and are the instructors of record.

Because Chapman University recognizes the competitive academic job market and the increase in adjunct positions without benefits, the Department of English has expanded its Graduate Assistantship program to prepare MFA students for work in arts organizations, in publishing and editing, and in the nonprofit sector. These Graduate Assistantships earn an hourly wage for internship work. GAs within the department work with Tabula Poetica or the John Fowles Center for Creative Writing or are assigned to a particular faculty member for teaching and research. In addition, the department partners with the Dean of Students Office, *Chapman Magazine*, the Writing Center, and other offices to offer Graduate Assistantships with hands-on experiences. These opportunities help our students consider a variety of career options and explore the creative industries.

## MFA ACADEMIC REQUIREMENTS



### MFA In Creative Writing

Hours in thought, in books, on the keyboard. Hours talking with each other and visiting writers about how to create something extraordinary in the world.

The MFA program requires 36 credits of coursework, 21 of which are in creative writing. The remaining 15 credits can be chosen from a variety of literature, rhetoric, and digital humanities courses. Among these electives are courses connected with the Fowles Reading Series and Tabula Poetica, and independent study is also possible.

**Aspects of a Writer** The incoming cohort creates a network that can sustain each MFA student through the thesis process and a lifetime of writing. This first course introduces MFA students to the creative writing faculty, to literary citizenship and creative industries, and to writers, editors, and other professionals.

**Techniques of Creative Writing** Each MFA student takes one techniques course in fiction, poetry, or nonfiction to focus on literary conventions, techniques, and devices that apply in and across genres.

---

## APPLICATION DEADLINES

Submit your application and all supporting documents online by the deadlines listed below. Applications received after these deadlines will be considered on a rolling basis as space is available.

**Workshops** Each MFA student takes four creative writing workshops in fiction, poetry, and/or creative nonfiction. Some students focus on one genre, while many work across genres in their coursework. This option to work in multiple genres, to take risks, and to build a portfolio of writing skills for a lifetime distinguishes our students.

**Thesis** The program culminates in a thesis in fiction, poetry, or creative nonfiction. Some students write a collection of literary short stories, while others write genre novels. Poetry students run the gamut from fixed form to lyric to experimental, and nonfiction students write everything from reportage to memoir. With approval, students can do a thesis in playwriting, screenwriting, or graphic modes. Chapman University's MFA program holds students to the highest standards while encouraging anything imaginable.

**Dual Degree MA/MFA** We're here to read widely and write boldly. The Dual Degree combines the MFA and the MA in a 54-credit program that is usually completed in three years of full-time study. Students can apply to the Dual-Degree program directly or can apply to combine programs during the first year of enrollment in either individual program. The innovative Dual Degree appeals especially to those students interested in teaching at the university, community college, or secondary-school level.

- For Fall Semester, including fellowship and scholarship consideration: **February 1**
- For Spring Semester: **November 1**